

25th Annual

RESCENT

REEK

ANGUS

Bull & Female Sale

SATURDAY APRIL 1, 2023

AT THE FARM 1 MILE EAST & 3 MILES NORTH OF GOODEVE, SK

LUNCH 12 NOON

SALE AT 1:00PM



MIKE OLYNYK
1928-2002

Welcome....

Welcome to the 25th annual bull and female sale. It seems the first sale was just yesterday but judging by the pictures maybe not. The following is the foreword from the first annual sale 25 years ago. There is a saying "the more things change the more they stay the same" or "where there is a will there is a way."

It is with great pleasure that we here at Crescent Creek welcome you to our 1st Annual Sale. It was with humble beginnings that this herd of females began some 45 years ago. Through perseverance and time, it has grown to a band of 160+ females that truly are the main stay at this farm. What we have to offer is a program built around performance and predictability. Both these factors, we feel, are of the utmost importance in this beef business.

Our bulls have natural thickness, are easy fleshing and mature early with large testicles and sound feet and legs. We offer to you bulls that have calving ease for heifers and bulls with birth weights that will add pounds in the fall and at pay day. The bulls are semen tested and are on the Canadian Angus Performance Program. They have been hand fed a growing ration in large pens, thus assuring proper development and breeding soundness. These bulls are ready to go and do their job.

The females in the sale come from a cross section of bloodlines from our replacement pen. If it were not for this sale many of these females would be consigned to the successful 'FALL FINALE' sale later this year, thus guaranteeing you top quality a little earlier in the year.

We feel our numbers have grown large enough to offer to you for sale an excellent cross section of our program. We are still small enough to offer to you excellent personal and meaningful service for your operation. We invite you, our friends and neighbours in this exciting beef business, to come and join us the farm for lunch, hospitality and to evaluate our program. If you need assistance of any kind regarding the offering, feel free to call or drop in.

We are truly grateful for the amount of people who over the years have chosen our program for their source of breeding stock. More important is the friendships that were created thru this event. We are thankful for those who laid the foundation to make this the special event it is for us and you. Thank you to the sale staff past and present who take such an interest in our program and this event, and all the individuals who help prepare for it.

The first 25 are behind us, we look forward to the next 25 to continue with such enthusiasm. Thank you for taking the time to appraise the offering and we look forward to visiting with you on sale day April 1 or at our open house March 18th&19th.

The planning of this particular event started two years ago when particular cows were flushed and mated in such a way to offer new and outcross genetics for you. Walking bulls were acquired to continue the strong tradition of superior Angus female qualities and bulls with ample muscle and performance.

Take Care,

-The Olyniks

Welcome from OBI

25 YEARS!!!! What an accomplishment; congratulations to the entire Crescent Creek Angus Family.

Well this opening has many feelings attached to it, OBI has been with this sale for all of them. Dad and Mike Olynyk had a vision, if I remember the story correct, Rob told Mike to build a barn and "They Will Come". And boy have they ever come, every year to the sale. The connection our families have had over the many years is second to none. The decisions made with both parties involved were seriously considered with one thing in mind, building the best cow herd. If you ever have the pleasure to tour the cows at Crescent Creek, you will not be disappointed with the consistency and udder quality. This was developed over the many, many years of this operation.



OBI LIVESTOCK LTD.

Mark Holowaychuk 403-896-4990
Roger Peters 403-828-9815
Kurt Pedersen 780 209-9999

I toured the pens in early February this year and the bulls were as good as ever with large scrotals, big tops, easy doing and full of meat and muscle. With a lot of new sire groups for you to choose from with a number of ET calves this year leading the way. Bulls are fed for longevity in mind that can move many miles for the new owners. The depth is the key to these bull pens with many to choose from and of course the cow families back them up.

The females on offer this year are very special as well. They come right from the heart of the program with great pedigrees. The cow families here are the key again, these females will go into your operation and take your program to the next level. Numerous females have gone to new homes and have been cornerstones to their programs.

I have been thru the offering and the herd many times and know the cow families; buy with confidence here. If you need any assistance, please do not hesitate to call myself or any of the sales staff.

Mark Holowaychuk, OBI

Video Sale

**ALL BULLS & FEMALES WILL BE PENNED OUTSIDE PRIOR & DURING THE SALE.
CATTLE WILL BE SOLD BY VIDEO. NO CATTLE WILL ENTER THE RING.**

Sale Videos

VIDEOS AVAILABLE ONLINE FOR VIEWING

WWW.CRESCENTCREEKANGUS.COM

WWW.DLMS.CA

WWW.BUYAGRO.COM

**Can't make it to the sale?
Internet Bidding Available.**

To view this sale visit www.dlms.ca, Fill out the registration form located under registration and sign-up for your free user account and select a username and password.

BIDDERS - To be approved as a bidder, Log in to dlms.ca and click BUYER APPROVAL tab, select the sale you are interested in bidding at and click sign up.

For more information
Call DLMS Reps:
Mark Shologan - 780-699-5082 or
DLMS Purebred Team 780.991-3025

DLMS
www.dlms.ca

We are proud to support the Canadian Angus Foundation 15 for 50 Program

With **YOUR** help we will continue to further the Foundation's mission and the breed.

15%
of a lot
means
a lot...

In 2019 over \$80,000 was **INVESTED** in member education, awards, bursaries and youth scholarships.

\$180,000 invested in **ANGUS** research over the last three years leveraged an additional \$360,000 in grant funding.

\$60,000+ has been invested in history and archives, including the 2019 Canadian Angus history book.

If you are interested in giving back or learning more about this new initiative, please contact Belinda Wagner, Canadian Angus Foundation Executive Director at 306-757-6133 or email bwagner@cdnangus.ca. You can also visit the Canadian Angus Foundation website at www.cdnangus.ca/foundation/.



The Canadian Angus Foundation functions to preserve and expand the Angus breed for future generations through education, youth development, scientific and market research, and historical preservation and restoration. The Canadian Angus Foundation was incorporated in 1993 and is the charitable arm of the Canadian Angus Association. Donations are tax deductible.

AVERAGE EPDS FOR ALL BLACK ANGUS CALVES BORN IN 2022

	Birth Weight	Weaning Weight	Yearling Weight	Milk	CalvingEase
EPD	+2.0	+52	+92	+23	+3.5

EPDS ARE UPDATED FREQUENTLY BY THE ASSOCIATION AND ARE CURRENT AS OF FEBRUARY 18, 2023
205 & 365 DAY WEIGHTS ARE ADJUSTED WEIGHTS

What do the numbers mean?

For most commercial cattlemen, there are really only four EPDs they need to look at: birth weight (BW); weaning weight (WW); yearling weight (YW); and milk. The others, with perhaps the exception of the carcass traits, are more useful for purbred breeders.

BIRTHWEIGHT - Calf weight at birth adjusted to a mature dam equivalent. Expected progeny difference is reported in pounds. The larger the EPD indicates a heavier average birth weight

WEANING WEIGHT - Calf weight taken between 160 and 250 days of age and adjusted to 205 days of age and a mature dam equivalent. Expected progeny difference is reported in pounds. The larger EPD indicates a heavier average weaning weight for calves sired by that bull.

YEARLING WEIGHT - Weight taken between 330 and 440 days of age and adjusted 365 days of age and a mature dam equivalent. Expected progeny difference is reported in pounds. The larger EPD indicates a heavier average yearling weight for calves sired by that bull

MILK - The milk EPD is a predictor of a sire's genetic merit for milk as expressed in his daughters, or in other words the part of weaning weight attributed to milk genes. The larger EPD indicates heavier average weaning weight due to daughters' greater maternal ability.

CALVING EASE

Bulls have been rated (in our opinion) on calving ease ability

* - recommended on cows

** - moderate birth

*** - indicates calving ease elite

WATCH FOR THE CALVING EASE BANNER IN THE SALE BOOK.

*** Calving Ease

A Note About Birth Weights

ANGUS BULLS HAVE LONG BEEN KNOWN FOR THEIR CALVING EASE. IF YOU ARE BREEDING HEIFERS, ANGUS IS THE GO-TO BREED OF CHOICE. BUT WHERE DO THE "BIG" BIRTH WEIGHT BULLS FIT IN? MATURE COWS SHOULD BE ABLE TO CALVE OUT UP TO 7% OF THEIR BODY WEIGHT UNASSISTED. IT IS RARE FOR MATURE COWS TO REQUIRE ASSISTANCE, EXCEPT FOR ABNORMAL DELIVERIES SUCH AS BACKWARDS OR BREECH DELIVERIES. EPD'S CAN BE USEFUL BUT CONFUSING TO INTERPRET.

IF A BULL HAS A BIRTH WEIGHT EPD OF +5 HIS PROGENY WOULD BE ON AVERAGE 3 LBS HEAVIER THAN BREED AVERAGE (5 - 2 LBS = 3 LBS). HOWEVER THERE ARE MANY OTHER FACTORS THAT CONTRIBUTE TO BIRTH WEIGHTS.

MORAL OF THE STORY: IF YOU ARE BREEDING MATURE COWS TO AN ANGUS BULL, DON'T MAKE BIRTH WEIGHT YOUR FOCUS.

Feeding Program

OUR PHILOSOPHY IS TO MAKE THESE YOUNG BULLS LAST AS LONG AS THEY CAN. AS WE TALK TO OUR CUSTOMER BASE WE THINK IT IS WORKING. MANY HERD BULLS LASTING MULTIPLE YEARS FOR THEIR OWNERS. WE NEVER FEED TO COMPROMISE BREEDING OR STRUCTURAL SOUNDNESS. AS IN THE PAST THE BULLS ARE HAND FED BROWN OAT AND PROTEIN PELLET RATION WITH FREE CHOICE HAY. WE STRIVE FOR A THREE POUND A DAY GAIN, AND THE BULLS ARE FED WITH THIS IN MIND. THE BULL CALVES WERE WEANED SEPTEMBER 25.

THE FEMALES WERE WEANED OCTOBER 5 AND PUT ON BANKED GRASS UNTIL MID NOVEMBER, THEN MOVED TO SWATH GRAZING UNTIL MID DECEMBER, AT WHICH TIME THEY WERE SWITCHED TO A BROWN OAT AND PELLET RATION. IT IS AMAZING HOW WELL THESE YOUNG FEMALES DID ON EXTENDED GRAZING.

ACTUAL WEANING WEIGHTS ARE AVAILABLE UPON REQUEST.

Herd Health

THE VACCINATION PROGRAM CONSISTED OF EXPRESS 5 AND BLACKLEG SHOTS. ALL BREEDING FEMALES & BULLS WILL HAVE HAD THEIR PRE-BREEDING EXPRESS 5 VACCINE AND BLACKLEG BOOSTER PRIOR TO THE SALE. THE CATTLE HAVE HAD PLENTY OF EXERCISE IN LARGE PENS, AND ARE VERY FREE MOVING.

offering.....

63 BLACK ANGUS YEARLING BULLS
47 TOP CUT BLACK ANGUS OPEN FEMALES

Sale Day Phones

SALE BARN	306.876.4420
WES CELL	306.728.8284
WADE CELL	306.730.7673
RYAN HURLBURT, AUCTIONEER	306.292.9812
MARK HOLOWAYCHUK, OBI	403.896.4990
KURT PEDERSEN, OBI	780.209.9999
ROGER PETERS, OBI	403.828.9815
NATE MARIN, RING SERVICE	306.869.7130
MARK STOCK, RINGSERVICE	403.357.8104
DARIN BOUCHARD	204.761.5251
JACKIE SAWLEY	306.607.9042

Sale Info

- Enrolled on CAP (Canadian Angus Performance)
- All cattle ROP tested since 1965 (a firm belief for producing superior beef cattle at Crescent Creek)
- All Crescent Creek Cattle are Fully Guaranteed for both soundness and fertility
- Bulls will be semen tested as well as have scrotal measurements (available sale day)
- Delivery can be arranged with Crescent Creek
- Crescent Creek's breeding program has developed many 1/2 and 3/4 brothers (Consistency Counts)
- Actual sale weights will be available sale day.
- Crescent Creek reserves the right to collect semen on any bull.

CRESCENT CREEK CATTLE
ARE AFFORDABLE



SPECIAL REPRESENTATIVES

Myles Immerkar, CEO Canadian Angus Association
 Bob Toner, Canadian Angus Association
 Chad Hollinger, President SK Angus Association

INSURANCE

Bonnie Thompson, Alameda Agencies - 306-489-2258
 cell: 306-489-2053
 fax: 306-483-7311

TERMS OF SALE

Cash or cheque at par payable on Sale Day, unless other arrangements have been made prior to sale. Registration papers will be transferred only upon full and final payment. Announcements from the block will take precedence over printed material in the catalog.

PAYMENT TERMS

Females 60% down sale day, 40% October 1, 2023, two cheques sale day.

TERMS & CONDITIONS

All cattle sell under the standard terms and conditions set forth by the Canadian Angus Association. Precautions have been taken to ensure your safety, neither Owners or Management are responsible for any accidents.

Crescent Creek Angus will keep animals until May 1, 2023.
Crescent Creek Angus is not liable for any injuries or death on uninsured bulls

Insurance on animals staying at the farm is encouraged.

ACCOMMODATIONS

Melville Inn, Melville, SK - 306-728-5255
 Sigma Inn & Suites, Melville, SK - 306-728-4688
 Howard Johnson, Melville, SK - 306-728-4546

BULL VOLUME DISCOUNT

3% on 3 bulls, 4% on 4 bulls, 5% on 5 bulls or more

FEED SPECIALIST

Carson Kristjanson 306-269-7845

SEMEN EVALUATION/EMBRYO WORK

Peak Vet Services, Semen Evaluation 306-692-4800

HERD HEALTH

Melville Vet Clinic 306-728-4456
 Animal Health Center of Melville - 306-728-2633

VIDEOS

Chris Moulding - 306-690-9450

PICTURES

Tyler Harris Photography

CLIPPING

Rose Curry

SALEBOOK

Katie Olynky Anderson- KatieDidOkay Designs

\$100 discount per buyer on purchases over \$3000
If taken home within 7 days of the sale

TALK TO WES OR WADE ABOUT
OUR SIGHT UNSEEN PROGRAM

COLEMAN CHARLO 0256 X CRESCENT CREEK EULA 22X

OCC PAXTON 730P
COLEMAN CHARLO 0256
 BOHI ABIGAIL 6014



COLEMAN CHARLO 0256

CRESCENT CREEK PACESETTER 16U
CRESCENT CREEK EULA 22X
 CRESCENT CREEK EULA 190T

WOS 3k – We lead off the sale this year with a bull that deserves the number one spot. A bull packed with red meat and muscle as well as perfect foot, big testicle, and a pedigree packed with maternal goodness. Some of the top performing females at CCA are backed by this bull's sire. Coleman Charlo needs no introduction to the industry. Charlo x with Eula 22x has been an almost perfect mating for us. The Eula cow family has stood the test of time here producing top females and herd bulls for us. You will notice 22x flush along with the flush of her mother 190T in the next few lots. As well as one of our show bulls and top bull in our 25th annual sale off Eula 68E, top daughter of 22x. if you are looking for a bull to add maternal power backed by proven genetics and structural soundness then look no farther here. Any better odds of getting a surefire herd bull out of 3K or 16K, then you would be winning every game of blackjack in Vegas.



LOT 1

CRESCENT CREEK CHAMP 3K

(ET) Male WOS 3K January 02 2022 2291121

LOT 2

CRESCENT CREEK CARLOS 16K

(ET) Male WOS 16K January 10 2022 2292384

BW:	WW:	YW:	CE:	B EPD:	W EPD:	Y EPD:	MILK:	CE EPD:
78	715	1121	***	-1.1	40	59	22	6.5

BW:	WW:	YW:	CE:	B EPD:	W EPD:	Y EPD:	MILK:	CE EPD:
92	754	1238	***	0.8	45	71	22	6.5



WOS 16K – Full sib to 3K, 16K is just as powerful and eye catching as his brother. We have always written about much the mother cow means to us. The females that either one of these bulls produced would be building blocks to any herd. Do not look past maternal greatness with great phenotype and structural soundness for your next bull.

SELLING 1/2 INTEREST AND
1/2 POSSESSION

MC CUMBER TRIBUTE 702 x CRESCENT CREEK EULA 22X

MC CUMBER TREMEMNDOUS 2008
MC CUMBER TRIBUTE 702
 LASSIE 113 OF MC CUMBER



MC CUMBER TRIBUTE 702

CRESCENT CREEK PACESETTER 16U
CRESCENT CREEK EULA 22X
 CRESCENT CREEK EULA 190T



LOT 3

CRESCENT CREEK TRIBUTE 2K

(ET) Male WOS 2K January 02 2022 2291163

BW:	WW:	YW:	CE:	B EPD:	W EPD:	Y EPD:	MILK:	CE EPD:
74	597	1036	***	-0.9	39	62	21	8

LOT 4

CRESCENT CREEK TRIBUTE 8K

(ET) Male WMO 8K January 02 2022 2291494

BW:	WW:	YW:	CE:	B EPD:	W EPD:	Y EPD:	MILK:	CE EPD:
75	652	1116	***	-0.6	43	69	21	8

**JOIN US FOR OUR
 OPEN HOUSE
 MARCH 18 & 19**





DL RAINMAKER 1879
SIRE OF LOT 5



CRESCENT CREEK EULA 68E
DAM OF LOT 5



LOT 5

WMO 37K – A DL Rainmaker son off the great Eula 68E (22x daughter) cow who will enter our donor program this year. This bull has the appropriate name, because when it rains, it pours. Top 4% in weaning weight and 9% in yearling weight. When it comes to selling steer calves you will be fetching top \$ and those future bull calves will be top in the pen. A pedigree backed by maternal power so you know those females off this bull will be great future cows. Circle this bull if you want a bull that structurally sound with big testicle, great foot, big hip, and hairy but also will add performance to your calf crop. **SELLING HALF INTEREST AND HALF POSSESSION.**

LOT
5

CRESCENT CREEK CLOUDBURST 37K

Male WMO 37K January 16 2022 2264509

LOT
6

CRESCENT CREEK KNOW HOW 64K

Male WMO 64K January 27 2022 2291446

HILLTOP RAINMAKER 6274 CHAPMAN MEMENTO 3589A
DL RAINMAKER 1879 **CRESCENT CREEK EULA 68E**
DL RUBY 496 CRESCENT CREEK EULA 22X

HOOVER NO DOUBT REMITALL F WARRIOR 2W
HOOVER KNOW HOW **BROOKMORE TIBBIE 148B CAF**
BLKCP EMPRESS ELLSTON L265' BROOKMORE TIBBIE 63R

BW:	WW:	YW:	CE:	B EPD:	W EPD:	Y EPD:	MILK:	CE EPD:
87	793	1310	**	2.4	74	122	23	3

BW:	WW:	YW:	CE:	B EPD:	W EPD:	Y EPD:	MILK:	CE EPD:
89	813	1394	*	3.2	66	128	24	0

WMO 64K – The lone Hoover Know How in the sale this year. 64K was an alternate on the show team and for good reason. A bull in the pen that rises to the top with just pure mass. Big hip, middle, extra length and packed with meat. A sound foot under this bull with a unique pedigree and backed by the great Tibbie cow family. A bull that offers top 7% in weaning weight, so you will get the most out of your calves.

SALE FEATURE



LOT 6



HOOVER KNOW HOW
SIRE OF LOT 6



BROOKMORE TIBBIE 148B
DAM OF LOT 6

CROWFOOT EQUATION 5793R X CRESCENT CREEK EULA 190T

OCC LEGACY 839L
CROWFOOT EQUATION 5793R
 CROWFOOT FORKS 755K



CAR IDEAL 061
CRESCENT CREEK EULA 190T
 CRESCENT CREEK EULA 94L

CROWFOOT EQUATION 5793R

WOS 20,22,11K – These 3 brothers are dad favorite bulls in the sale. Two of the oldest pedigrees you will find in our sale book, but you wouldn't believe that by looking at the bulls. 3 bulls that are almost identical in size, muscle structure, structural soundness, and maternal greatness. 190T has been our top donor to date, with one flush netting 25 grade 1 embryos and countless daughters working in herd. These 3 sons will leave you calves that will always be at the top of the pack. Bigger frame bulls that do not give up anything, truly an impressive set of bulls to see. If you want older but proven genetics, then look at these bulls. These bulls are on the top of dads list so they should be on the top of yours as well. Your next cow bulls are right here.

LOT
7

CRESCENT CREEK EQUATION 20K

(ET) Male WOS 20K January 11 2022 2291279

BW:	WW:	YW:	CE:	B EPD:	W EPD:	Y EPD:	MILK:	CE EPD:
106	763	1305	*	6.2	47	86	31	-3



LOT 7

LOT
8

CRESCENT CREEK EQUATION 22K

(ET) Male WOS 22K January 12 2022 2291053

BW:	WW:	YW:	CE:	B EPD:	W EPD:	Y EPD:	MILK:	CE EPD:
92	674	1151	*	4.6	38	68	31	-3



LOT 8

LOT
9

CRESCENT CREEK EQUATION 11K

(ET) Male WOS 11K January 08 2022 2291080

BW:	WW:	YW:	CE:	B EPD:	W EPD:	Y EPD:	MILK:	CE EPD:
85	667	1164	**	3.6	38	69	31	-3



LOT 9

**LOT
10**

CRESCENT CREEK LAWMAN 14K

Male WMO 14K January 10 2022 2275667

PM EXECUTIVE DECISION 5'17
W SUNRISE EXECUTIVE LAW 507H
HF TIBBIE 27D

CRESCENT CREEK ALTERNATIVE 516
CRESCENT CREEK DUCHESS 015F
CRESCENT CREEK DUCHESS 63W

BW	87
WW	753
YW	1275
CE	**
B EPD	2.4
W EPD	65
Y EPD	113
Milk	21
CE EPD	4



WMO 14K – Lawman indeed. This bull has unique twist to him as he is a straight Canadian pedigree. This bull was apart of our pen of 3 bulls that we showed this fall. Getting a lot of attention from everyone that seen him. A bigger framed bull that has a BIG hip and extra length. This bull comes in at top 15% in weaning weight to add \$ in your pocket off future calves. Note this bull won King of the Ring in Yorkton this fall against a strong showing of bulls of all breeds. A bull with a different pedigree that will do good anywhere he goes.

**LOT
11**

CRESCENT CREEK LAWMAN 24K

Male WOS 24K January 13 2022 2275668

PM EXECUTIVE DECISION 5'17
W SUNRISE EXECUTIVE LAW 507H
HF TIBBIE 27D

CHAPMAN MEMENTO 3589A
CRESCENT CREEK ROSEBUD 6E
CRESCENT CREEK ROSEBUD 15A

BW	92
WW	806
YW	1316
CE	**
B EPD	2.1
W EPD	71
Y EPD	121
Milk	23
CE EPD	4



WOS 24K – Another 507H son that offers structural soundness as well as top weaning and yearling weights. A bull that will offer top phenotypical bulls that are sound but also be some of the heaviest in the pen. Backed by the great Rosebud cow family. With 15A backing some great cattle working at Bircham Ranch and for Traci Henderson.



CRESCENT CREEK DUCHESS 015F
DAM OF LOT 10



W SUNRISE EXECUTIVE LAW 507H
SIRE OF LOTS 10 AND 11



CRESCENT CREEK ROSEBUD 6E
DAM OF LOT 11



CAR NEXT STEP 889

Male IMP 889F January 25 2018 2141280

SYDGEN 928 DESTINATION 5420

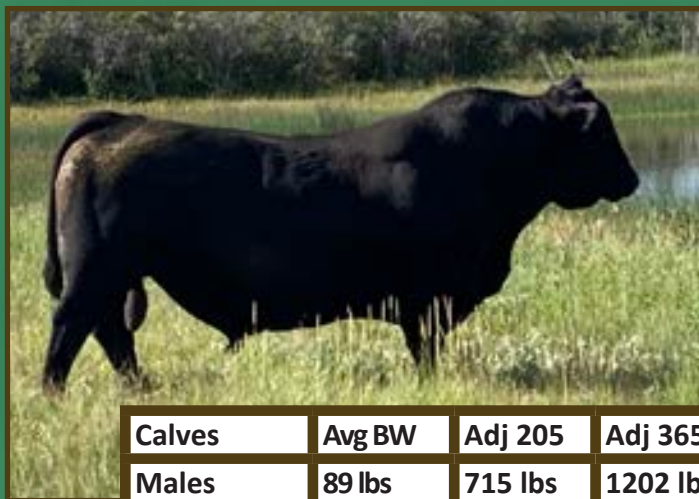
PRAIRIE PRIDE NEXT STEP 2036
FLYING V MISS PRIDE 426

LAR WINDY 64 423S

CAR MISS SUSIE 060

CAR SUSIE 101

BW	85
WW	768
YW	1213
B EPD	3.9
W EPD	75
Y EPD	127
Milk	33
CE EPD	0



Calves	Avg BW	Adj 205	Adj 365
Males	89 lbs	715 lbs	1202 lbs
Females	84 lbs	650 lbs	909 lbs

JUST AS HIS NAME IMPLIES HE IS THE NEXT STEP IN OUR BREEDING PROGRAM. THIS BULL OFFERS WHAT WE ALL STRIVE FOR IN A BREEDING BULL. A GOOD BALANCE ,NO EXTREMES IN ANY ONE TRAIT. HIS YOUNG FEMALES HAVE BECOME EXCELLENT BROOD COWS, SENSIBLE IN DISPOSITION AND EXCELLENT IN UDDER QUALITY AND FOOT MAKE UP. THE FEMALES IN HIS PEDIGREE HAVE THAT BRED IN ABILITY TO LAST FOR YEARS. THE BULLS OFFERED ARE PERFORMANCE ORIENTATED BY DESIGN. THEY WILL ADD EXTRA POUNDS AT PAYDAY. THEY ARE NOT SO CALLED HIEFER BULLS. NOT EXTREME IN ANY WAY BUT BULLS THAT WILL COVER COWS ALL SEASON LONG. THE CALF CROP OFF THIS SIRE ARE EITHER HERE AS BREEDING REPLACEMENTS OR POTENTIAL HERD SIRES OR RETAINED AT HOME. NO THROW AWAYS IN THIS SIRES OFFERING.

LOT
12

CRESCENT CREEK NEXTSTEP 39K

Male WOS 39K January 16 2022 2264452

MC CUMBER 8R101 RITO 1136

CAR NEXT STEP 889

CRESCENT CREEK ERICA 39D

CRESCENT CREEK ERICA 46T

BW:	WW:	YW:	CE:	B EPD:	W EPD:	Y EPD:	MILK:	CE EPD:
90	732	1184	**	3.4	58	97	29	0

WOS 39K – Performance and maternal power have been the theme of these sons. Same can be said about 39K, backed by the great Erica Cow family and a perfect uddered 39D. I think this bull could leave you females that build great mothers and great herds.



LOT 12

LOT
13

CRESCENT CREEK NEXT STEP 15K

Male WOS 15K January 10 2022 2264410

S CHISUM 0206

CAR NEXT STEP 889 CRESCENT CREEK ROSEBUD 23D

CRESCENT CREEK ROSEBUD 205T

BW:	WW:	YW:	CE:	B EPD:	W EPD:	Y EPD:	MILK:	CE EPD:
86	720	1165	**	2.6	62	99	29	1

WOS 15K – A Nextstep son who follows other pen mates and offers performance, structural soundness, big nuts, and backed by power dam. With half-brothers working for Fred, Ed Lansdall, Bob McLeod, and Ken Smuk.



LOT
14

CRESCENT CREEK NS 215K

Male WOS 215K March 17 2022 2299194

GLENNIE PRIME CUT 16B

CAR NEXT STEP 889 GLENNIE M'BROOK LASS 51E

GLENNIE M'BROOK LASS 43B

BW:	WW:	YW:	CE:	B EPD:	W EPD:	Y EPD:	MILK:	CE EPD:
70	688	1095	***	-0.1	45	67	27	7

WOS 215K- This guy is one of the youngest offerings in the sale, but he gives up no performance to his pen mates. Total outcross pedigree.



LOT
15

CRESCENT CREEK NEXT STEP 30K

Male DOS 30K January 15 2022 2264478

S CHISUM 0206

CAR NEXT STEP 889 CRESCENT CREEK LASS 118D

CRESCENT CREEK EMBLAZON 49T

BW:	WW:	YW:	CE:	B EPD:	W EPD:	Y EPD:	MILK:	CE EPD:
90	709	1199	*	3.5	59	101	27	0

DOS 30K – 30K offers a more moderate frame compared to some of his brothers but does not give anything up in terms of performance, hip, middle, and length. These Nextstep calves are an impressive group to see. The Lass cow family has always been a consistent producer here. Half brother working at Diamond C Land + Cattle.



LOT
16

CRESCENT CREEK NEXT STEP 36K

Male WOS 36K January 16 2022 2264449

CRESCENT CREEK PACESETTER 16U

CAR NEXT STEP 889 CRESCENT CREEK ROSEBUD 94A

CRESCENT CREEK ROSEBUD 101T

BW:	WW:	YW:	CE:	B EPD:	W EPD:	Y EPD:	MILK:	CE EPD:
95	828	1157	**	3.0	66	100	27	-1

WOS 36K – Offering top 5% and 7% in weaning and yearling weight here is a bull that really stands out. Phenotype wise and as well pedigree wise. The Grandmother of this bull has been well used in our program. With sons working for Wyatt Isaacson, NYK Cattle Co, and Bircham Ranch. 101T has been in the donor program as well. With 94A being dad's favorite Rosebud female, you know you can buy with confidence here.



**LOT
17****CRESCENT CREEK NEXT STEP 12K**

Male WOS 12K January 09 2022 2264400

CRESCENT CREEK PACESETTER 16U

CAR NEXT STEP 889 CRESCENT CREEK ROSEBUD 47B

CRESCENT CREEK ROSEBUD 101T

BW:	WW:	YW:	CE:	B EPD:	W EPD:	Y EPD:	MILK:	CE EPD:
104	854	1266	*	5.1	73	113	26	-6

WOS 12K – Leading off the impressive Nextstep group of sons is a bull that crushed the scale at weaning. A bull that offers big muscle and structural soundness but backed by the ever-maternal Rosebud cow family. If selling steer calves off the cow come weaning then this bull will fetch you top market dollar, topping 2% weaning EPD in the angus breed.

**LOT 17****LOT
18****CRESCENT CREEK NEXT STEP 42K**

Male WOS 42K January 18 2022 2264463

B C C-J C L EMBLAZON 038-287

CAR NEXT STEP 889 CRESCENT CREEK QUEEN RUTH 67Y

CRESCENT CREEK QUEEN RUTH 56T

BW:	WW:	YW:	CE:	B EPD:	W EPD:	Y EPD:	MILK:	CE EPD:
84	797	1119	**	4.3	70	114	28	-2

WOS 42K – Another Nextstep son to crush the scale at weaning and January weigh in. Impressive EPD numbers as weaning is top 6% in the breed and yearling sits at top 10%. Note this bull is backed by the Elite Dam 67Y cow that has had 3 different sons walk in our Crescent Creek herd and for Pine Grove Angus, MCS Angus, and Neil Perry. As well as a half sib sold to Chapman Cattle Co.

**LOT 18****LOT
19****CRESCENT CREEK NEXTSTEP 55K**

Male WOS 55K January 22 2022 2299184

CRESCENT CREEK PACESETTER 16U

CAR NEXT STEP 889 CRESCENT CREEK BARANDA 104Y

CRESCENT CREEK BARANDA 212T

BW:	WW:	YW:	CE:	B EPD:	W EPD:	Y EPD:	MILK:	CE EPD:
85	698	1176	**	1.9	53	86	25	3

WOS 55K – Nextstep son with attractive shape and length. This bull will add muscle, hair, and maternal power pedigree to your cows. Backed by the proven Baranda 104Y cow, mother to 1H who was offered as top pick female in 23rd annual sale.

**LOT 19****LOT
20****CRESCENT CREEK NEXTSTEP 74K**

Male WMO 74K January 28 2022 2264859

S MCCOY 373

CAR NEXT STEP 889**CRESCENT CREEK EULA 48D**

CRESCENT CREEK EULA 22X

BW:	WW:	YW:	CE:	B EPD:	W EPD:	Y EPD:	MILK:	CE EPD:
92	782	1215	*	2.4	62	96	28	1

WMO 74K – Note this guy's pedigree here. Backed by the great Eula cow family with his grandmother being 22X. With that being said his potential can be huge. Another bull that was on the short list for the show pen after an impressive fall weaning.

**LOT 20****SALE FEATURE**

LOT
21

CRESCENT CREEK NEXT STEP 86K

Male WMO 86K January 31 2022 2264862

MC CUMBER 8R101 RITO 1136

CAR NEXT STEP 889

CRESCENT CREEK ANNIE K 55D

EASTONDALE ANNIE K 30'10

BW:	WW:	YW:	CE:	B EPD:	W EPD:	Y EPD:	MILK:	CE EPD:
82	676	1173	**	2.1	57	102	29	4

WMO 86K – A bull with great upside here. Backed by one of the most impressive cows to see at CCA. 55D has been no slouch, a former show cow that has hit it out of the park with almost all her calves. As well as his grandmother being an Elite dam for the Canadian Angus Association. I think one of the top Nextstep sons on offer.



LOT 21

LOT
23

CRESCENT CREEK NEXT STEP 108K

Male WMO 108K February 04 2022 2299349

HA PRIME CUT 4493

CAR NEXT STEP 889

U2 ANNIE 301D

U2 ANNIE 304W

BW:	WW:	YW:	CE:	B EPD:	W EPD:	Y EPD:	MILK:	CE EPD:
100	746	1269	*	4.6	73	125	29	-1

WMO 108K – Top 5% for weaning weight and top 6% for yearling weight. The consistent performance in this sire group is impressive and important. Consistent = Proven. Backed by a very impressive Annie daughter from U2. A cow that can wean off big calves and not give up on maternal traits. Half-brother working for Dan Sawley.



U2 ANNIE 301D
DAM OF LOT 23

LOT
22

CRESCENT CREEK NEXT STEP 95K

Male WOS 95K February 02 2022 2269948

CRESCENT CREEK PACESETTER 16U

CAR NEXT STEP 889

CRESCENT CREEK ROSEBUD 19X

CRESCENT CREEK ROSEBUD 199S

BW:	WW:	YW:	CE:	B EPD:	W EPD:	Y EPD:	MILK:	CE EPD:
80	633	1162	***	1	49	81	24	5

WOS 95K – Backed by the great Rosebud cow family this bull offers a big top, extra length, and a big hip. All of those combined will make a great recipe for his calves being at the top of the pen for anyone. Half brothers working at Nick Evans, Tony + Cindy Brock, and Carson, Carl, and Logan Kristjanson.



LOT 22

LOT
24

CRESCENT CREEK NEXT STEP 119K

Male WMO 119K February 06 2022 2270934

S MCCOY 373

CAR NEXT STEP 889

CRESCENT CREEK MELODY 91F

EVERBLACK MELODY 48D

BW:	WW:	YW:	CE:	B EPD:	W EPD:	Y EPD:	MILK:	CE EPD:
87	654	1138	**	2.8	52	92	28	1

WMO 119K – Full sibling to this bull was high selling female to Elk Ridge Angus in 23rd Annual sale. Nextstep has been consistent and consistently good.



LOT 24

**LOT
25**

CRESCENT CREEK NEXT STEP 130K

Male WOS 130K February 9 2022 2299350

CHAPMAN MEMENTO 3589A

CAR NEXT STEP 890 CRESCENT CREEK QUEEN RUTH 39E

CRESCENT CREEK QUEEN RUTH 14W

BW:	WW:	YW:	CE:	B EPD:	W EPD:	Y EPD:	MILK:	CE EPD:
95	633	1174	*	4.6	55	101	29	-2

WOS 130K – A impressive bull with extra hair and muscle backed by a very impressive memento dam. The memento dams never missed a beat here raising all the good ones. Half-brother working for Carson, Carl, and Logan Kristjanson.



LOT 25

**LOT
26**

CRESCENT CREEK NEXT UP 172K

Male WMO 172K February 19 2022 2271619

HA OUTSIDE 5161 OSF

CAR NEXT STEP 889

CRESCENT CREEK ROYAL PRIDE 5F

BAR B ROYAL PRIDE 12A

BW:	WW:	YW:	CE:	B EPD:	W EPD:	Y EPD:	MILK:	CE EPD:
95	788	1252	*	4.4	66	108	28	-3

WMO 172K – Another son that shows impressive weaning and yearling numbers that will add \$ to your bottom line. Extra hip and length with this son as well. With a full sib sister retained of in herd use and potentially top next step female. Pride 12A has not missed a beat, as she is a consistent producing cow with impressive looks.



LOT 26

**LOT
27**

CRESCENT CREEK NEXT STEP 117K

Male WOS 117K February 06 2022 2270925

CAR NEXT STEP 889

CRESCENT CREEK ENTREPRENEUR105A

CRESCENT CREEK NEONIA 67D

CRESCENT CREEK NEONIA 81Z

BW	100
WW	626
YW	1136
CE	*
B EPD	5.3
W EPD	51
Y EPD	90
Milk	27
CE EPD	-5



LOT 27

WOS 117K – Another Nextstep son off an Elite dam at CCA. That is how high we think of the 889 bull to breed all our top females to him. It has showed dividend with consistent group of high-performance calves with shape, muscle, length, and hair. Half brothers working for Fred, Ed Lansdall and Marsh Ranches.

LOT
28

CRESCENT CREEK BIG STEP 19K

Male WOS 19K January 10 2022 2264427

CAR NEXT STEP 889

CHAPMAN MEMENTO 3589A

CRESCENT CREEK NEXT STEP 4H **CRESCENT CREEK JOAN 7E**

CRESCENT CREEK ROSEBUD 163D CRESCENT CREEK JOAN 48Y

BW:	WW:	YW:	CE:	B EPD:	W EPD:	Y EPD:	MILK:	CE EPD:
78	719	1170	***	0	56	93	32	8

WOS 19K – The first of 3 4H sons in the sale. This guy offers a moderate frame with lengths and a big hip and quarter. An excellent foot is also seen in this bull. Backed by the ever-maternal Joan cow family who has produced some of the top sale calves in the last few years. Joan 7E is no surprise when it comes to raising the top calves. With a son walking in herd and another son walking at Andrew Cattle Co. A calving ease bull that will add pounds at weaning.



LOT
29

CRESCENT CREEK BIG STEP 62K

Male WOS 62K January 26 2022 2264520

CAR NEXT STEP 889

S MCCOY 373

CRESCENT CREEK NEXT STEP 4H

CRESCENT CREEK LADY BATE 194F

CRESCENT CREEK ROSEBUD 163D

CRESCENT CREEK LADY BATE 10D

BW:	WW:	YW:	CE:	B EPD:	W EPD:	Y EPD:	MILK:	CE EPD:
74	704	1111	***	0	47	76	27	5

*Calving Ease ****



LOT
30

CRESCENT CREEK 174K

Male KOS 174K February 20 2022 2299351

CAR NEXT STEP 889

YOUNG DALE DUPLICATE 137D

CRESCENT CREEK NEXT STEP 4H **CRESCENT CREEK STUMPIE 146G**

CRESCENT CREEK ROSEBUD 163D FIGURE 8 ANGUS STUMPIE 12N

BW:	WW:	YW:	CE:	B EPD:	W EPD:	Y EPD:	MILK:	CE EPD:
98	684	1232	*	6.6	58	103	18	-12



CRESCENT CREEK NEXT STEP 4H
HIGH SELLING BULL IN OUR 2021 SALE.
Co-owned with BANDURA RANCH.



WOS 174K – Last of the 4H sons we have. A bull backed by the great Stumpie pedigree. One of the younger bulls on offer in the sale but hard to tell. A bull with great length, middle, hair, and style. Mark this bull down for a maternal packed pedigree with Memento and Stumpie.



HA OUTSIDE 5161

MALE IMP 5161C FEBRUARY 24 2015 1950587

KG SOLUTION 0018

HA OUTSIDE 3008

HA EVER LADY 1575

APEX WINDY 078

HA BLACKCAP LADY 2338

H A BLACKCAP LADY 1055

BW	92
WW	685
YW	1302
B EPD	0.3
W EPD	48
Y EPD	79
Milk	33
CE EPD	9



Calves	Avg BW	Adj 205	Adj 365
Males	83 lbs	684 lbs	1207 lbs
Females	78 lbs	609 lbs	854 lbs

5161'S MILKING FEMALES ARE WHAT WE BELIEVE TO BE THE NEXT GREAT SET OF BROOD COWS HERE. "5161" HAS BECOME THE TRUE ANCHOR TO OUR PROGRAM. ONE CANNOT ASK FOR MORE THAN THIS BULL HAS DONE FOR OUR PROGRAM. HE IS HERE FOR THE LONG RUN.

CO-OWNED WITH SHEIDAGHAN ANGHUS

LOT
31

CRESCENT CREEK OUTSIDE 47K

Male WOS 47K January 21 2022 2264471

HA OUTSIDE 5161

KG RETAIL VALUE 8248 OSF
WINDY WILLOWS BEAUTY 42A
KG BEAUTY 4236

BW:	WW:	YW:	CE:	B EPD:	W EPD:	Y EPD:	MILK:	CE EPD:
85	732	1177	***	0.7	54	91	30	8

WOS 47K – This bull could of lead off our sale book let alone the outside sire group. Stamped with the consistent pattern of 5161. Long, thick, huge quarter, and rock-solid muscle. When you see this bull in person you will have him number 1 on your list. Every time I see this bull, I still cannot believe his shape and structural soundness. With over 250 calves off 5161 you know the consistency and results of what these calves will do. Offering a calving ease birth-weight, mark him down! To many half brothers out working to list, that is a selling feature alone.



LOT
32

CRESCENT CREEK OUTSIDE 35K

Male WOS 35K January 16 2022 2264444

HA OUTSIDE 5161

DWAJO CHIEF 92E
CRESCENT CREEK EROLLINE 29C
GLENDOR EROLLINE 36U

BW:	WW:	YW:	CE:	B EPD:	W EPD:	Y EPD:	MILK:	CE EPD:
85	814	1343	**	2.4	61	102	28	1

WOS 35K – Check out this guy here. Off a consistent hard-working cow who we have retained 3 females for in herd use. This guy is your typical outside son backed by maternal power and the great Dwajo Chief 92E. Dwajo Chief 92E was the anchor of many of our first sale offerings.



LOT
33

CRESCENT CREEK OUTSIDE 34K

Male WOS 34K January 16 2022 2264448

CRESCENT CREEK FORTUNE 67X

HA OUTSIDE 5161

CRESCENT CREEK ROSEBUD 79C

CRESCENT CREEK ROSEBUD 114Y

BW:	WW:	YW:	CE:	B EPD:	W EPD:	Y EPD:	MILK:	CE EPD:
95	692	1195	*	4.7	51	85	29	-2

WOS 34K – Stamped like his half-brothers this bull offers length, hip, and muscle. So many commercial producers have told us how they have had top notch steer calves off 5161 progeny. As well as the females being the top cows in the herd. 34k will be the same, a Swiss army knife of bulls. Half sibs at Roger Mutch, Jason Becker, and Denny Golden.



LOT
34

CRESCENT CREEK OUTSIDE 44K

Male WOS 44K January 19 2022 2264466

BAD LANDS RIGHT TIME 78N

HA OUTSIDE 5161

WWF RIGHT TIME LADY LEE 99X

WWF ADVANTAGE LADY LEE 47K

BW:	WW:	YW:	CE:	B EPD:	W EPD:	Y EPD:	MILK:	CE EPD:
97	735	1109	*	3.2	58	74	28	0

WOS 44K – Also a good feeling seeing these bulls come from Elite Dams. 99X is from our great friends the Sauter's in southern sask. An elite dam to come from Windy Willows you know she is hard working, structurally sound, and backed by great cows for generations. Half sib at Kayla Rousson's.



LOT
35

CRESCENT CREEK OUTSIDE 017K

Male WOS 017K January 10 2022 2264421

SANDY BAR IDEAL 185W 216Y

HA OUTSIDE 5161

IVANHOE HEROINE 46C

IVANHOE HEROINE 11W

BW:	WW:	YW:	CE:	B EPD:	W EPD:	Y EPD:	MILK:	CE EPD:
70	649	1113	**	3.6	51	87	26	-1.5

WOS 17/017K – These full brothers have been almost identical since birth. Both offer your typical outside look but have also had performance as well. Out of a straight Canadian female we obtained from the great people at Ivan Hoe Angus. These bulls are structurally sound and offer great hair and muscle. Half sibs at Vince Somogyi and Chad Kesig.



LOT
36

CRESCENT CREEK OUTSIDE 17K

Male WOS 17K January 10 2022 2266337

SANDY BAR IDEAL 185W 216Y

HA OUTSIDE 5161

IVANHOE HEROINE 46C

IVANHOE HEROINE 11W

BW:	WW:	YW:	CE:	B EPD:	W EPD:	Y EPD:	MILK:	CE EPD:
65	596	1054	**	3.6	51	87	26	-1.5





SITZ DRY VALLEY 712H

(ET) MALE IMP 712H JANUARY 24 2020 2248827

HOOVER NO DOUBT
CONNEALY DRY VALLEY
BECCA OF CONAGA 1617

SITZ UPWARD 307R
SITZ PRIDE 308Y
SITZ PRIDE 44P

BW	100
WW	842
YW	1445
B EPD	2.1
W EPD	59
Y EPD	102
Milk	26
CE EPD	8



Calves	Avg BW	Adj 205	Adj 365
Males	82 lbs	705 lbs	1223 lbs
Females	74 lbs	604 lbs	841 lbs

SITZ DRY VALLEY 712H. IT IS WITH GREAT ANTICIPATION THAT WE OFFER THIS SIRE GROUP FOR YOUR APPRAISAL. HE WAS ACQUIRED AS AN OUT-CROSS FOR OUR PROGRAM TO OFFER OUR CUSTOMER BASE A ALTERNATIVE TO THE PAST. AGAIN WITH ALL THAT WE LOOK FOR IN A SUPERIOR HERD BULL, SOUND FEET AND LEGS ABOVE AVERAGE MUSCLE GOOD TESTICLE DEVELOPMENT AND BACKED BY AN EXCEPTIONAL MOTHER WHO IS IN THE SITZ ANGUS EMBRYO PROGRAM. THUS ASSURING SOME PREDICTABILITY IN THE TYPE OF FEMALES WE LOOK FORWARD TO ENHANCING OUR PROGRAM. WE FEEL THIS YOUNG FELLOWS FUTURE IS BRIGHT.

OWNED WITH CHAPMAN CATTLE CO.

LOT
37

CRESCENT CREEK DRY VALLEY 126K

Male WOS 126K February 08 2022 2270929

CHAPMAN MEMENTO 3589A
SITZ DRY VALLEY 712H CRESCENT CREEK BLACKCAP 31G
CRESCENT CREEK BLACKCAP 125A

BW:	WW:	YW:	CE:	B EPD:	W EPD:	Y EPD:	MILK:	CE EPD:
85	699	1176	***	1.3	50	85	27	7

WOS 126K – The very first offering of Sitz Dry Valley calves for sale at CCA and Canada. A 712 son that is stamped with muscle, length, and perfect foot. These bulls will get your attention in the pen and are a great cross for any program. 712 son backed by the great blackcap cow family. The 31G cow has shown early promise to being a top producer at CCA.

LOT
38

CRESCENT CREEK DRY VALLEY 128K

Male WOS 128K February 09 2022 2271600

CRESCENT CREEK ALTERNATIVE 516
SITZ DRY VALLEY 712H CRESCENT CREEK DUCHESS 22G
CRESCENT CREEK DUCHESS 71C

BW:	WW:	YW:	CE:	B EPD:	W EPD:	Y EPD:	MILK:	CE EPD:
81	656	1185	***	0.4	44	85	27	10

WOS 128K – A Duchess dam here that has a great foot, feminine, and great udder as well. Calving ease 712 son that you will know help you sleep easy at night. Long made, muscle, and stout is what these bulls are.

Calving Ease ***



LOT 37

Calving Ease ***



LOT 38

LOT
39

CRESCENT CREEK 712 102K

Male WOS 102K February 04 2022 2299185

HA OUTSIDE 5161

SITZ DRY VALLEY 712H

CRESCENT CREEK JOAN 65G

GDAR JOAN 9175

BW:	WW:	YW:	CE:	B EPD:	W EPD:	Y EPD:	MILK:	CE EPD:
75	643	1172	***	-0.7	45	81	28	11

WOS 102K – A moderate, hard muscle long made bull with a great foot. The early signs of these bull calves have been overly exciting. There is a bull here for every producer and these bulls will take the program to the next step. A 712H x Joan pedigree that is unique to angus breed and our herd as well. Mark this bull down for calving ease and maternal power.



LOT 39

LOT
40

CRESCENT CREEK DRY VALLEY 131K (NHF)

Male WOS 131K NHF February 09 2022 2290769

3F EPIC 4631 NHC

SITZ DRY VALLEY 712H

CRESCENT CREEK QUEEN RUTH 43G NHC

CRESCENT CREEK QUEEN RUTH 155T

BW:	WW:	YW:	CE:	B EPD:	W EPD:	Y EPD:	MILK:	CE EPD:
75	883	1309	***	0.0	76	129	26	9

WOS 131K – Calving ease here as well. Small head and clean fronted bull that is appealing to everyone. Backed by the Queen Ruth cow family.



LOT 40

LOT
41

CRESCENT CREEK DRY VALLEY 132K

Male WMO 132K February 09 2022 2270937

CRESCENT CREEK FORTUNE 169C

SITZ DRY VALLEY 712H

CRESCENT CREEK EULA 80F

CRESCENT CREEK EULA 190T

BW:	WW:	YW:	CE:	B EPD:	W EPD:	Y EPD:	MILK:	CE EPD:
97	735	1264	*	5	54	95	26	-1

WMO 132K – A cow bull 712 son here. Note the 190T grandmother here as she is higher up in the sale book with the great Equation sons and grandmother to Charlo sons as well. Stamped with the 712 traits and backed by the maternal pedigree.



LOT 41

LOT
42

CRESCENT CREEK DRY VALLEY 162K

Male WOS 162K February 17 2022 2271606

HA OUTSIDE 5161

SITZ DRY VALLEY 712H

CRESCENT CREEK ROSEBUD 85G

CRESCENT CREEK ROSEBUD 66Y

BW:	WW:	YW:	CE:	B EPD:	W EPD:	Y EPD:	MILK:	CE EPD:
90	733	1242	**	3.1	53	94	22	3

WOS 162K – A larger birthweight bull that offers nice growth and an appealing look. This bull should be higher on your list as he is backed by the great Rosebud cow family.



LOT 42



SITZ DRY VALLEY 641H

MALE IMP 641H FEBRUARY 01 2020 2248254

HOOVER NO DOUBT

CONNEALY DRY VALLEY

BECCA OF CONAGA 1617

RAVEN POWERBALL 53

SITZ BLACKCAP 16E

SITZ BLACKCAP 191C

BW	73
WW	746
YW	1293
B EPD	-1.1
W EPD	51
Y EPD	96
Milk	36
CE EPD	17

CONNEALY DRY VALLEY
SIRE OF SITZ DRY VALLEY 641H AND 712H



Calves	Avg BW	Adj 205	Adj 365
Males	79 lbs	732 lbs	1235 lbs
Females	70 lbs	623 lbs	865 lbs

SITZ DRY VALLEY 641H. WHEN WE ACQUIRED THE SITZ BULLS LITTLE DID WE KNOW WHAT A SUDDEN IMPACT THESE BULLS WOULD HAVE. I HATE THE EXPRESSION "HIEFER BULL". I WOULD SOONER SAY CALVING EASE BULL BECAUSE THAT'S WHAT THEIR MEANT FOR. WE ALL WANT OUR HEIFERS TO CALVE UNASSISTED, BUT STILL WANT SOMETHING TO RETAIN WEATHER ITS REPLACEMENTS OR SALEABLE PRODUCTS. "641" IS EXACTLY THAT A CALVING EASE BULL. WE ARE SO IMPRESSED WITH HIS ABILITY TO COVER LARGE NUMBERS OF FEMALES IN A VERY SHORT EXPOSURE TIME AND THEN WATCH THESE CALVES DROP UNASSISTED, VIGOROUS AND GROW. I HAVE NEVER FELT SO COMFORTABLE IN RECOMMENDING A BULL FOR HEIFERS AS THIS BULLS SONS. "SLEEP EASY".

LOT
43

CRESCENT CREEK DRY VALLEY 89K

Male WOS 89K February 01 2022 2269945

CRESCENT CREEK ALTERNATIVE 516

SITZ DRY VALLEY 641H **CRESCENT CREEK QUEEN RUTH 12H**

CRESCENT CREEK QUEEN RUTH 14W

BW:	WW:	YW:	CE:	B EPD:	W EPD:	Y EPD:	MILK:	CE EPD:
70	729	1342	***	0.6	54	105	33	12

WOS 89K – Potentially my favorite 641H son for sale. Birthweight of 70LBS on top of it to make him a sure-fire sleep at night heifer bull. Mark this bull down to see in the pen and see what I mean. When you see Queen Ruth 14W in the maternal side, it is simply exceptional.



SALE FEATURE

LOT 43

LOT
44

CRESCENT CREEK DRY VALLEY 83K

Male WOS 83K January 30 2022 2269942

CRESCENT CREEK RITO 176C

SITZ DRY VALLEY 641H CRESCENT CREEK ROSEBUD 189H

CRESCENT CREEK ROSEBUD 124X

BW:	WW:	YW:	CE:	B EPD:	W EPD:	Y EPD:	MILK:	CE EPD:
88	796	1306	***	2.4	62	103	30	6

WOS 83K – Calving ease specialist here. Backed by great Rosebud cow family and donor grandmother 124X. These sons are really eye appealing in the pen and offer great weaning for calving ease bulls.



LOT
45

CRESCENT CREEK 641H 81K

Male WOS 81K January 30 2022 2269941

HA OUTSIDE 5161

SITZ DRY VALLEY 641H CRESCENT CREEK LASSIE 50H

CRESCENT CREEK LASSIE 57B

BW:	WW:	YW:	CE:	B EPD:	W EPD:	Y EPD:	MILK:	CE EPD:
77	786	1296	***	1.5	57	99	33	9

WOS 81K – The last 2 years of calving these 641H bulls has been amazing. Calving ease through and through. Heifers calve quick and the calves have a lot of get up and go. The sons will offer you the same piece of mind but also add in growth, shape, and structural soundness.



LOT
46

CRESCENT CREEK DRY VALLEY 114K

Male WOS 114K February 05 2022 2271596

HA OUTSIDE 5161

SITZ DRY VALLEY 641H CRESCENT CREEK ROYAL 111H

IVANHOE B.E. ROYAL 24Y

BW:	WW:	YW:	CE:	B EPD:	W EPD:	Y EPD:	MILK:	CE EPD:
88	737	1227	***	1.9	52	90	30	7

WOS 114K – A bull with great muscle expression, hair, and testicle development. We are extremely excited to see these bulls come into their own. Note the Royal cow family. 24Y would be the mother to the impressive "Rito" bull that left a big impression in the Bench farming cow herd.



LOT
47

CRESCENT CREEK DRY VALLEY 125K

Male WMO 125K February 08 2022 2270936

PEAK DOT ATTRACTIVE 186F

SITZ DRY VALLEY 641H CRESCENT CREEK ANNIE K 48H

U2 ANNIE 301D

BW:	WW:	YW:	CE:	B EPD:	W EPD:	Y EPD:	MILK:	CE EPD:
78	698	1137	***	0.4	51	91	28	11

WMO 125K – Top 6% in calving ease to help you sleep easy at night. 641 style to him with a pedigree backed by the Annie K cow family.



LOT
48

CRESCENT CREEK 641 176K

Male WOS 176K February 21 2022 2299189

CRESCENT CREEK ALTERNATIVE 54F

SITZ DRY VALLEY 641H CRESCENT CREEK TOPSY 7H

AW TOPSY 42C

BW:	WW:	YW:	CE:	B EPD:	W EPD:	Y EPD:	MILK:	CE EPD:
78	727	1178	***	1.3	53	89	31	8

WOS 176K- Another excellent 641H son. These bulls bring the meaning of calving ease to the top. Backed by one of the hardest working Allen Henderson cows we have here.



LOT
49

CRESCENT CREEK DRY VALLEY 120K

Male WMO 120K FEBRUARY 7, 2023 2270935

HA OUTSIDE 5161

SITZ DRY VALLEY 641H

CRESCENT CREEK DUCHESS 76H

CRESCENT CREEK DUCHESS 39B

BW:	WW:	YW:	CE:	B EPD:	W EPD:	Y EPD:	MILK:	CE EPD:
75	722	1103	***	0	43	72	30	11

WMO 120K- Last of the 641 sons for sale this year but an exciting group. Hair, muscle, structural soundness. These bulls have huge opportunity to be a great calving ease bulls with a different pedigree twist. Same can be said about this young bull.



LOT
50

CRESCENT CREEK SCOTCHMAN 78K

Male WOS 78K January 29 2022 2270083

SHEIDAGHAN GREAT SCOT 44Z

MC CUMBER 8R101 RITO 1136

MACNAB SCOTCHMAN 379E

CRESCENT CREEK LADY BATE 54D

MACNAB IVY 379Y

CRESCENT CREEK LADY BATE 49R

BW:	WW:	YW:	CE:	B EPD:	W EPD:	Y EPD:	MILK:	CE EPD:
94	829	1377	*	2.5	56	108	26	2

WOS 78K - The 379 sons have always performed well in our herd. A full brother is working at Bear Creek Angus and have heard nothing but good things from them. A bull with a sharp angus head, excellent foot, and big hip/quarter. This bull will really catch your eye with his extra length he offers. A bigger framed bull that matched with the lady bate cow family will really add some power to his calves.





CRESCENT CREEK FORTUNATE 8B

Male WOS 8B JANUARY 23 2014 1814288

SINCLAIR EMULATE 7XT28

SINCLAIR FORTUNATE SON

SINCLAIR BLACKBIRD 2P8 7079

CRESCENT CREEK PACESETTER 16U

CRESCENT CREEK ROSEBUD 124X

CRESCENT CREEK ROSEBUD 86U

BW	86
WW	700
YW	1205
B EPD	1
W EPD	47
Y EPD	83
Milk	20
CE EPD	0



Calves	Avg BW	Adj 205	Adj 365
Males	83 lbs	694 lbs	1195 lbs
Females	79 lbs	622 lbs	889 lbs

WE RETAINED AN INTEREST IN "CF" FOR THE SIMPLE REASON WE THOUGHT THAT THE CATTLE IN HIS PEDIGREE WERE WHAT WE ARE TRYING TO EMULATE. HIS DAM IS ONE OF THE FINEST HERE, COMBINED WITH THE POWER OF THE SINCLAIR FORTUNATE SON THAT DID SUCH AN ENVIABLE JOB AT McCUMBER ANGUS. 8B SHOWS NO SIGN OF QUITTING. HIS FOOT IS PROBABLY ONE OF THE BEST YOU WILL FIND ON ANY BULL. HIS TRUE TREASURE IS THE SET OF FEMALES AT BOTH CRESCENT CREEK AND PINE GROVE ANGUS.

LOT
51

CRESCENT CREEK CF 101K

Male WMO 101K February 04 2022 2299196

CRESCENT CREEK ALTERNATIVE 516

CRESCENT CREEK FORTUNATE 8B **CRESCENT CREEK DUCHESS 15F**

CRESCENT CREEK DUCHESS 63W

BW:	WW:	YW:	CE:	B EPD:	W EPD:	Y EPD:	MILK:	CE EPD:
78	720	1262	***	0.7	50	90	24	4



LOT
52

CRESCENT CREEK CF8B 85K

Male WOS 85K January 30 2022 2269944

CHAPMAN MEMENTO 3589A

CRESCENT CREEK FORTUNATE 8B CRESCENT CREEK LADY BATE 8E

CRESCENT CREEK LADY BATE 4Z

BW:	WW:	YW:	CE:	B EPD:	W EPD:	Y EPD:	MILK:	CE EPD:
66	641	1125	***	-1.1	43	76	23	7



LOT 52

LOT
53

CRESCENT CREEK CF8B 136K

Male WOS 136K February 09 2022 2270941

SCHEARBROOK SHOSHONE

CRESCENT CREEK FORTUNATE 8B CRESCENT CREEK BLACKCAP 100F

CRESCENT CREEK BLACKCAP 92D

BW:	WW:	YW:	CE:	B EPD:	W EPD:	Y EPD:	MILK:	CE EPD:
74	706	1080	***	-1.5	32	49	26	6



LOT 53

LOT
54

CRESCENT CREEK CF8B 76K

Male KOS 76K January 28 2022 2269940

CRESCENT CREEK PACESETTER 16U

CRESCENT CREEK FORTUNATE 8B CRESCENT CREEK HEROINE 151E

CRESCENT CREEK HEROINE 2X

BW:	WW:	YW:	CE:	B EPD:	W EPD:	Y EPD:	MILK:	CE EPD:
86	639	1148	**	1.8	43	74	17	0

KOS 76K – Longevity is one of the most overlooked traits in cattle the last few years. Yet it is one of the best traits to pay. CF 8B has been exactly that. A bull that has never missed a beat in breeding or calving. This bull has an exceptional foot, structure, and look. At 8 years old he bred over 45 cows and still maintained perfect shape. Note any of these 8B sons for longevity just like their sire, a sure money maker.



LOT 54

LOT
55

CRESCENT CREEK CF 158K

Male DOS 158K February 16 2022 2299197

CRESCENT CREEK FORTUNE 169C

CRESCENT CREEK FORTUNATE 8B CRESCENT CREEK NANCE 154F

CRESCENT CREEK NANCE 44T

BW:	WW:	YW:	CE:	B EPD:	W EPD:	Y EPD:	MILK:	CE EPD:
90	717	1233	*	2.2	49	86	20	0



CRESCENT CREEK NANCE 44T
GRANDDAM OF LOT 55



LOT 55

LOT
56

CRESCENT CREEK 50K

Male WMO 50K January 21 2022 2299715

BC LOOKOUT 7024

CRESCENT CREEK ENTREPRENEUR 105A

CRESCENT CREEK LOOKOUT 60H **CRESCENT CREEK LARK 183H**

CRESCENT CREEK ROSEBUD 101T MCS LARK 35C

BW:	WW:	YW:	CE:	B EPD:	W EPD:	Y EPD:	MILK:	CE EPD:
81	709	1141	***	2.0	39	63	26	2

WMO 50K – A really unique and eye appealing BC Lookout grandson. A heifers first calf that calved easy and has added some performance to him as well. A different pedigree for us as well backed by the great Lark cow family, who originated from the MCS Angus herd of Marj & Mel Solvason. This cow family has consistently weaned off and had top sale cattle in past sales. BC Lookout cattle have made a splash in the industry with cattle working at Mac Angus in Quebec, Bircham Ranch, and Elk Ridge Angus.



LOT
57

CRESCENT CREEK CONTENDER 157K

Male KOS 157K February 16 2022 2271633

HA COUNSELOR 5118

CRESCENT CREEK FORTUNATE 8B

CRESCENT CREEK COUNSELOR 63H **CRESCENT CREEK STUMPIE 161H**

CRESCENT CREEK PRIDE 72F CRESCENT CREEK STUMPIE 3B

BW:	WW:	YW:	CE:	B EPD:	W EPD:	Y EPD:	MILK:	CE EPD:
82	784	1268	***	1.7	54	95	26	3

KOS 157K – A great choice for anyone looking for a heifer bull. A bull offers a bit more frame but doesn't give up on length, middle, or structural soundness. This bull has a different pedigree as well with Stumpie X HA Counsellor. Every Counsellor we have had has been a sleep easy heifer bull. Sired by high selling bull to Elk Ridge Farms, Rossburn, MB.



LOT 57

LOT
58

CRESCENT CREEK MONUMENTAL 107K

Male WOS 107K February 04 2022 2271594

EXAR MONUMENTAL 6056B

CAR NEXT STEP 889

CUDLOBE MONUMENTAL 112H **CRESCENT CREEK ROSEBUD 164H**

CUDLOBE MISS PRIDE 108F CRESCENT CREEK ROSEBUD 95F

BW:	WW:	YW:	CE:	B EPD:	W EPD:	Y EPD:	MILK:	CE EPD:
65	727	1185	***	-1.5	50	85	28	12

WOS 107K – A bull that I have always liked. Moderate with a ton of middle and a great foot under him. Large testicle and big top as well. A all around stylish bull in my mind. Offering calving ease in moderate but powerful frame. Backed by the great Rosebud cow family and Express ranches as well.



CUDLOBE MONUMENTAL 112H
SIRE OF LOT 58



CRESCENT CREEK COUNSELOR 63H
SIRE OF LOT 57



LOT 58

Another set of great Gladiator bulls here. Backed by the great 67Y cow that hasn't aged since day 1. These bulls will offer you big time steer calves and a excellent choice for females to retain. Last year our high selling heifer was out of the 115G bull, a almost perfect female to us. Buy a cow bull with confidence here. These bulls offer large bone, hip, shape, and style along with the Queen Ruth cow family. 67Y has had 3 bulls walk at CCA and for good reason. Hard to beat a cow that is almost all around perfect, and as maternal as they come.

LOT
59

CRESCENT CREEK 115G 171K

Male WOS 171K February 19 2022 2299188

FLEURY BRUTUS 132B

LT BANDWAGON

CRESCENT CREEK GLADIATOR 115G CRESCENT CREEK ROSEBUD 33F

CRESCENT CREEK QUEEN RUTH 67Y CRESCENT CREEK ROSEBUD 14R

BW:	WW:	YW:	CE:	B EPD:	W EPD:	Y EPD:	MILK:	CE EPD:
86	692	1202	*	2.8	44	74	23	1



LOT 59

LOT
60

CRESCENT CREEK 115G 187K

Male WOS 187K February 28 2022 2299191

FLEURY BRUTUS 132B

HA OUTSIDE 5161

CRESCENT CREEK GLADIATOR 115G CRESCENT CREEK ROSEBUD 173E

CRESCENT CREEK QUEEN RUTH 67Y CRESCENT CREEK ROSEBUD 47B

BW:	WW:	YW:	CE:	B EPD:	W EPD:	Y EPD:	MILK:	CE EPD:
100	732	1203	*	6	53	88	23	-7



LOT 60

LOT
61

CRESCENT CREEK GL 217K

Male WOS 217K March 18 2022 2299195

FLEURY BRUTUS 132B

CRESCENT CREEK FORTUNATE 8B

CRESCENT CREEK GLADIATOR 115G CRESCENT CREEK DUCHESS 131E

CRESCENT CREEK QUEEN RUTH 67Y CRESCENT CREEK DUCHESS 179A

BW:	WW:	YW:	CE:	B EPD:	W EPD:	Y EPD:	MILK:	CE EPD:
85	716	1213	**	3.1	47	78	18	0



LOT 61

CRESCENT CREEK GLADIATOR 115G
SIRE OF LOTS 59, 60, AND 61

LOT
62

CRESCENT CREEK 54F 148K

Male WOS 148K February 14 2022 2299187

CRESCENT CREEK ALTERNATIVE 516
CRESCENT CREEK ALTERNATIVE 54F
CRESCENT CREEK QUEEN RUTH 67Y

LT BANDWAGON 3105
CRESCENT CREEK PRIDE 72F
CRESCENT CREEK PRIDE 22D

BW	82
WW	674
YW	1222
CE	***
B EPD	2.1
W EPD	48
Y EPD	88
Milk	31
CE EPD	4



LOT 62

LOT
63

CRESCENT CREEK 54F 208K

Male WOS 208K March 10 2022 2299192

CRESCENT CREEK ALTERNATIVE 516
CRESCENT CREEK ALTERNATIVE 54F
CRESCENT CREEK QUEEN RUTH 67Y

CRESCENT CREEK PACESETTER 16U
CRESCENT CREEK ROSEBUD 119B
CRESCENT CREEK ROSEBUD 7R

BW	92
WW	634
YW	1111
CE	*
B EPD	4
W EPD	40.1
Y EPD	69
Milk	23
CE EPD	-4



LOT 63

PRETTY VIEW STOCK FARM LTD. Northstar Genetics & Imperial Seed
Corn & Forage Seed Sales

Ivan Olynyk
Phone / Text: 306-562-7925 | Email: ivan@prettyview.net

PVSE

NR MILL Feeding Your Needs
New Rosedale Feedmill

Dan & Jackie Sawley
Dealer
Box 2
Fenwood, SK
S0A 0Y0

Cell: 306.607.9042
Email: jackie@sawley.ca
nrfeedmill.com

CORTEVA agriscience

There is more behind every seed.
PRODUCTS ♦ SERVICE ♦ SUPPORT

Joelle & Blaine Carlson
CARLSON SEED- Melville, SK
(306) 728-7848
joelle.carlson@plantpioneer.com

CANOLA - CORN - SOYBEANS - ALFALFA

GOOD HOPE AG

**VERTICAL MANURE SPREADER RENTALS
DOZER & EXCAVATOR WORK
CUSTOM SWATHING & HAY CUTTING**

**WILLEM: 306-794-3134
JESSE: 306-730-5056
WCBOOG@YOURLINK.CA
FIND US ON FACEBOOK**

Thank You 2022 BUYERS

RODGER MUTCH*
DAVID IVANOCHKO*
KERRY O'DONNELL*
WADE WINTERS*
LLB ANGUS FARMS LTD.*
LESANN FARMS*
DARRYL BIERWAGEN*
BRYAN STADNYK*
PINEGROVE ANGUS*
FRED LANSALL*
RYAN & LENA NIELSEN*
DAN PETHERBRIDGE*
JESSE HIDUK*
EAST POINT CATTLE CO.*
MACY BURKELL*
MACNAB ANGUS*
DOUG AND MARLENE LYON*
VAUGHN DEMETRICK*
LINDSAY HORVATH*
DANNY SAWLEY*
ARON HERSHMILLER*
WADE BARTKIW*
RUSSELL BAN*

CHADWICK BURBACK*
BOB MCLEOD*
DEAN ROUSSON ENTERPRISE FARMS LTD.
BRIAN PATRON*
MARK McMURPHY
NATHAN GUILLOUX*
JARED MARTIN*
WYATT ISAACSON*
GERRAD WENZEL*
DWAYNE ZRYMIK*
DEON PUTLAND*
CALVIN MURPHY*
JEREMY PILKEY
REJEAN MCNEIL*
TIM SCHIESTAL*
NICHOLAS EVANS
CRAIG RENKAS
JEREMY & ROXANNE KNAPP
JEREMY FEDAK
KAIN ROBERTSON
COURTLAND WHITE
LOGAN DEW
JARED NAGY

MONA HOWE
ELAINE WESSING*
JACK KLEINSASSER*
CHRIS HALLDORSON*
BRIAN BERRNS*
RICHARD KRUPSKI
KYLE DORDU
TY HEATON
HAROLD HALLSON
JOHN KOBITZ
DALLAS MALCHUK
KENDRA NOLAN
DENNY & LYNN GOLDEN
ADRIAN TSCHETTER
CHARLES OAKLEY*
JEREMY ANDREWS*
STEPHEN REYKDAL*
WILLEM BOOGAARD*
PAUL DMYTROW*
TRACY WESSING*

*** REPEAT BUYERS**

OVER 75% OF 2022 BUYERS WERE REPEAT BUYERS

IN 24 SALES WE HAVE **NEVER** CHARGED FOR EXTRA FEED OR DELIVERY FOR ANY OF THE SALE CATTLE.



OUR AWESOME RANCH HAND LANE FRITZ WITH HIS
BEAUTIFUL WIFE ALEX, AND THEIR ADORABLE
DAUGHTER LORETTA LYNNE!



HIGH SELLING BULLS



1999
CRESCENT CREEK MAIN EVENT 6H
MINBURN ANGUS-\$6100



2000
CRESCENT CREEK BARDOLIER 39J
MINBURN ANGUS-\$11,200



2001
CRESCENT CREEK CHIEF 56K
LLB ANGUS- \$12,000



2002
CRESCENT CREEK GERONIMO 42L
LOOKOUT STOCK FARM- \$24,000



2003
CRESCENT CREEK QUANTUM 79M
SEMEX, U2, LAZY R, RUSS SIBBALD- \$17,700



2004
CRESCENT CREEK QUANTUM 32N
WINDOVER ANGUS- \$12,000



2005
CRESCENT CREEK IMAGEMAKER 55P
EVERYBLACK ANGUS \$10,000



2006
CRESCENT CREEK SUPER X 188R
JOHNSON LIVESTOCK- \$24,750



2007
CRESCENT CREEK IDEAL 90S
NORDAL FARMS- \$8,500



2008
CRESCENT CREEK PACESETTER 20T
SHEIDAGHAN ANGHUS- \$7,500



2009
CRESCENT CREEK PACESETTER 20U
BRONYX ANGUS- \$12,500



2010
CRESCENT CREEK TOMBOY 15W
BAR CR ANGUS- \$26,500



2011
CRESCENT CREEK EMBLAZON 109X
NORDAL FARMS- \$11,000



2012
CRESCENT CREEK BIG JOHN 22Y
K5 RIVER RANCH- \$8,200



2013
CRESCENT CREEK CHISUM 12Z
OWEN MAWBEY- \$9,000



2014
CRESCENT CREEK CHIZZLAR 10A
NORDAL FARMS & LLB- \$18,000



2015
CRESCENT CREEK RITO 61B
BENCH FARMS- \$12,500



2016
CRESCENT CREEK ALLIANCE 16C
NEILSON LAND & CATTLE, &
DIAMOND T- \$24,000



2017
CRESCENT CREEK MOMENTUM 134D
FRED LANSDALL \$11,000



2018
CRESCENT CREEK ENTREPRENEUR 52E
DAN SAWLEY- \$15,000



2019
CRESCENT CREEK OUTSIDE 7F
MIDLAND CATTLE CO.- \$20,000



2020
CRESCENT CREEK BRUTUS 110G
MIDLAND CATTLE CO.-\$13,000



2021
CRESCENT CREEK NEXT STEP 4H
BANDURA RANCHES- \$26,000



2022
CRESCENT CREEK LEGEND 22J
K LAZY T CATTLE CO. &
BIRCHAM RANCHES- \$16,000

HIGH SELLING FEMALES



1999
CRESCENT CREEK PRIDE LADY 5H
J.P. ANGUS- \$2,400



2000
CRESCENT CREEK BARDOLIER 39J
WARREN PIHROG- \$2,800



2001
CRESCENT CREEK ELBA 105K
GORDON POMEDHI- \$5,300



2002
CRESCENT CREEK QUEEN RUTH 38L
DOUG & DIANNE LEE- \$4,000



2003
RED CRESCENT CREEK IDESSA 137M
LYALL EDGERTON- \$3,600



2004
CRESCENT CREEK LADY 74N
REMINGTON CATTLE CO.- \$4,000



2006
CRESCENT CREEK ROSEBUD 4R
BRUCE MAWBEY- \$11,000



2007
CRESCENT CREEK HEROINE 162S
ROCKING S RANCH- \$3,900



2009
CRESCENT CREEK TIERRA 24U
RON CORDES- \$3,000



2010
CRESCENT CREEK ROSEBUD 138W
LARRY NIELSON- \$2,900



2011
CRESCENT CREEK ROSEBUD 74X
CAIRMLEE ACRES- \$3,300



2012
CRESCENT CREEK ROSEBUD 109Y
CRYSTAL D FARMS- \$4,300



2013
CRESCENT CREEK QUEEN RUTH 33Z
KODY TRAXEL- \$4,700



2014
CRESCENT CREEK DUCHESS 20A
SHANE SAWLEY- \$5,250



2015
CRESCENT CREEK ROSEBUD 010B
CIRCLE BAR RANCH- \$6,750



2016
CRESCENT CREEK JOAN 3C
JOSEF MONVOISON- \$8,000



2017
CRESCENT CREEK ROSEBUD 23D
BEAR CREEK ANGUS- \$7,250



2018
CRESCENT CREEK PRIDE 100E
PINE GROVE ANGUS- \$7,250



2019
CRESCENT CREEK ROSEBUD 31F
MIDLAND CATTLE CO.- \$7,250



2020
CRESCENT CREEK ROSEBUD 94G
MIDLAND CATTLE CO.- \$7,000

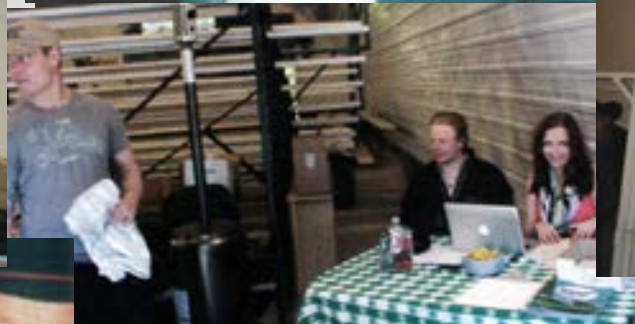


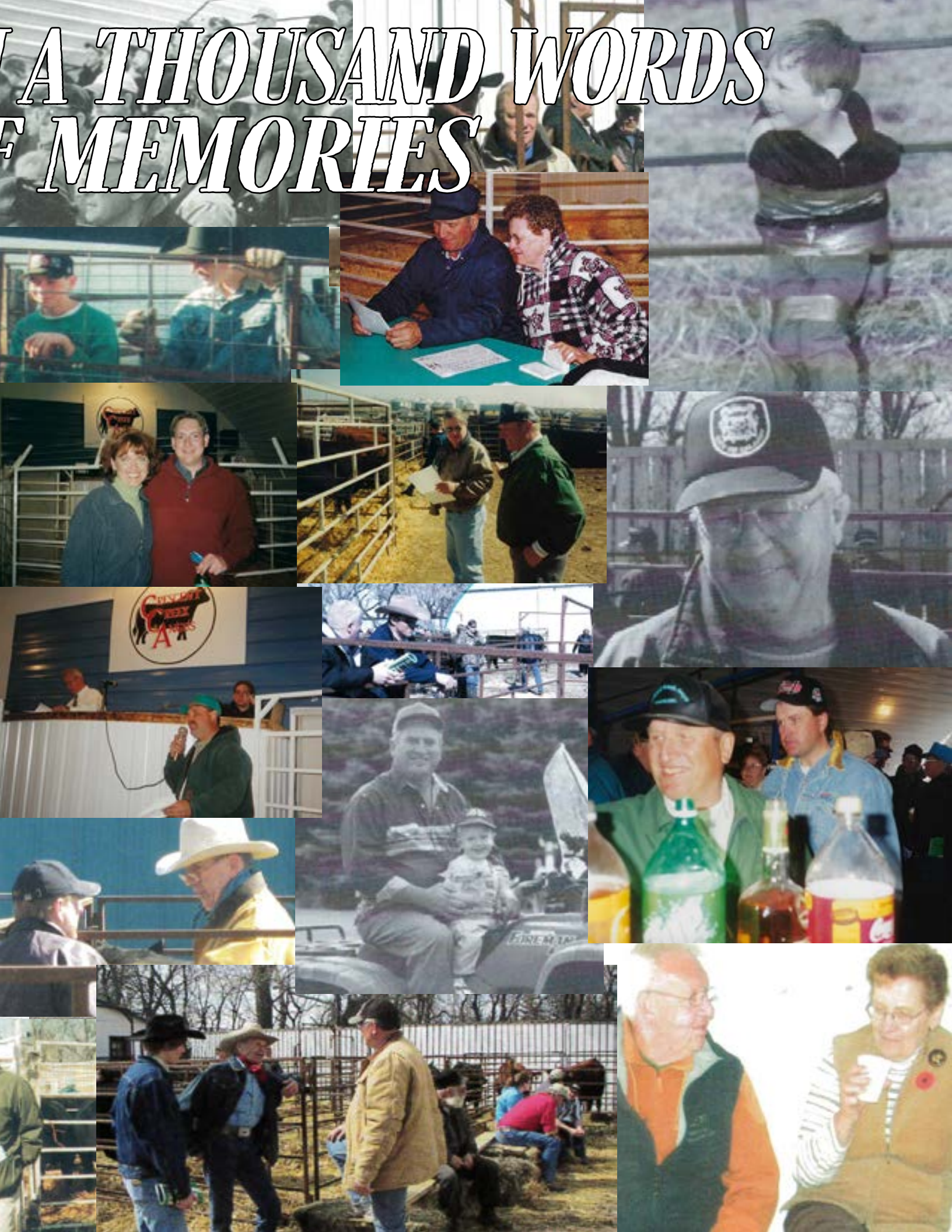
2021
CRESCENT CREEK MISTRESS 53H
TINY ANGUS- \$20,000



2022
CRESCENT CREEK ROSEBUD 70J
ELK RIDGE RANCH- \$10,000

A PICTURE IS WORTH 24 YEARS OF





CRESCENT CREEK COWS



BROOKEMORE TIBBIE 148B
DAM OF LOT 6



CRESCENT CREEK ROYAL PRIDE 5F
DAM OF LOT 26



CRESCENT CREEK ROSEBUD 6E
DAM OF LOT 11



CRESCENT CREEK JOAN 7E
DAM OF LOT LOT 28



CRESCENT CREEK DUCHESS 015F
DAM OF LOT 10



CRESCENT CREEK BLACKCAP 31G
DAM OF LOT 37



CRESCENT CREEK ERICA 39D
DAM OF LOT 12



CRESCENT CREEK EULA 48D
DAM OF LOT 20



CRESCENT CREEK ANNIE K 55D
DAM OF LOT 21



CRESCENT CREEK NEONIA 67D
DAM OF LOT 27



CRESCENT CREEK EULA 68E
DAM OF LOT 5



CRESCENT CREEK EULA 80F
DAM OF LOT 41



CRESCENT CREEK BLACKCAP 100F
DAM OF LOT 53



CRESCENT CREEK ROSEBUD 189H
DAM OF LOT 44



CRESCENT CREEK LADY BATE 194F
DAM OF LOT 30



U2 ANNIE 301D
DAM OF LOT 23

CRESCENT CREEK HERD BULLS



CRESCENT CREEK NEXT STEP 4H



CRESCENT CREEK ALTERNATIVE 516



CHAPMAN MEMENTO 3589A



MC CUMBER 8R101 RITO 1136



CRESCENT CREEK PACESETTER 16U



CRESCENT CREEK ENTREPRENEUR 105A



CRESCENT CREEK MAIN EVENT 6H



CRESCENT CREEK TOMBOY 15W

CRESCENT CREEK HEIFERS

As the hype of the spring bull sale season approaches, we are no different than other seedstock producers. We try to put our best foot forward and present outstanding young herd bull prospects. More recently though, we have been very focused on presenting to you what we think are the backbones of many very successful operations. That, of course, is the mother cow. Year after year our heifer selection has been improving to the point that we are truly holding nothing back. We feel very fortunate in the fact that this selection is due to the many years of breeding sound Angus females with traits that make the breed so popular.

Last fall as we drove out and checked these young females as they chewed away on swaths, you had to be impressed at how well they adapted. I called them my little cow herd. This was a true test of feed conversion. As you study the offering you can see it didn't hurt their development at all.

Each and every year we look forward to the sale offering of females with as much excitement as the bulls. Our sale group seems to get stronger every year as well. We attribute part of that to the fact of so many of our sale hieifers coming from the youngest brood cows in the herd. The newest and freshest genetics from the time tested cow families. No better time to get into some of the best we have to offer. Be prepared to see ,truly one of the finest offerings.

Remember 60% down sale day, 40% October 1, 2023. Value like that is hard to match! Footnotes will be few. The offering speaks for itself.

We have seen these young females go on and produce for their new owner's sale cattle, show cattle, and embryo dams. This is one thing that is very important to us. It is no small task to offer such a large part of our breeding program for sale, over so many years, and yet still maintain a brood cow herd to bring high quality offering year in and year out.

*Regardless of your needs or price range, we will have heifers
that you can depend on*



SELLING CHOICE

COLEMAN CHARLO 0256 X CRESCENT CREEK EULA 22X

OCC PAXTON 730P
COLEMAN CHARLO 0256
 BOHI ABIGAIL 6014



CRESCENT CREEK PACESETTER 16U
CRESCENT CREEK EULA 22X
 CRESCENT CREEK EULA 190T

Pick of the heifers Charlo – We are extremely excited to offer a pick of our Charlo females this year. There is no doubt in our mind that these females will go on and be the next great cow for anyone and any program. We have fallen in love with our Charlo females as they are great mothers, maternal, easy doing, and stylish. These cows are moderate and deep bodied cattle with excellent feet and udders. The type of cows that stick out in a pen of 10 or a pen of 100. Charlo crossed with the great Eula 22X cow is a mating we feel is for the ages. 22X is a cow that has knocked it out time and time again. The females from 22X have been some of the top performers in the herd. Offering maternal traits, great feet, and udders, as well as perfect phenotype. Crossing two maternal and phenotypical sound animals has proven to be a great success. When you see these females, you will see why. Deep, stylish, powerful, and moderate heifers that catch your eye right from the start. You cannot go wrong with choosing anyone of these girls. We can go on and on about the quality of these females, but you need to see them. Once you see them, you'll want them in your herd. I wish we had 100 of these females on offer.

LOT
64

CRESCENT CREEK EULA 1K

(ET) Female WOS 1K January 02 2022 2291164

BW:	WW:	YW:	B EPD:	W EPD:	Y EPD:	MILK:	CE EPD:
80	619	1023	0.6	44	77	22	6.5

LOT
66

CRESCENT CREEK EULA 38K

(ET)Female WOS 38K January 16 2022 2291245

BW:	WW:	YW:	B EPD:	W EPD:	Y EPD:	MILK:	CE EPD:
84	646	888	0.5	40	61	22	6.5

LOT
65

CRESCENT CREEK EULA 29K

(ET) Female WOS 29K January 14 2022 2291073

BW:	WW:	YW:	B EPD:	W EPD:	Y EPD:	MILK:	CE EPD:
78	608	917	-0.2	42	67	22	6.5



LOT 64



LOT 66



LOT 65

SELLING CHOICE ON
 LOTS
 64, 65, AND 66

SELLING CHOICE

Here is another exciting opportunity to acquire Eula 22X genetics and improve your cow herd. Here we have 1 Tribute x 22X embryo. The quality of the tribute females we have retained are second to none. These cows are stylish, maternal, great udders, and sound. We have calved out a handful of these Tributes and we cannot get enough of them. We feel these heifers crossed with the maternal 22X could make the almost perfect female. If your focus is on longevity, soundness, maternal traits, and udder quality then look here. If you want to obtain a Stumpie genetic line the look out our Tribute x 22X female. You cannot go wrong with one of the most proven cow families to walk at CCA. Along with maternal greatness, these females will be phenotypical sound.

LOT
67

CRESCENT CREEK EULA 4K

(ET) Female WMO 4K January 02 2022 2291174

MC CUMBER TREMEMNDOUS 2008 CRESCENT CREEK PACESETTER 16U
MC CUMBER TRIBUTE 702 CRESCENT CREEK EULA 22X
LASSIE 113 OF MC CUMBER CRESCENT CREEK EULA 190T

BW:	WW:	YW:	B EPD:	W EPD:	Y EPD:	MILK:	CE EPD:
80	600	889	0.9	46	75	21	8



Lot 67

LOT
68

CRESCENT CREEK STUMPIE 23K

(ET) Female WOS 23K January 12 2022 2291054

MC CUMBER TREMEMNDOUS 2008 CRESCENT CREEK ALLIANCE 29N
MC CUMBER TRIBUTE 702 CRESCENT CREEK STUMPIE 9R
LASSIE 113 OF MC CUMBER FIGURE 8 ANGUS STUMPIE 12N

BW:	WW:	YW:	B EPD:	W EPD:	Y EPD:	MILK:	CE EPD:
68	558	794	-1.1	38	64	22	9



Lot 68



Mc Cumber Tribute 702

LOT
69

CRESCENT CREEK EULA 5K

(ET) Female WOS 5K January 02 2022 2291167

BASIN PAYWEIGHT 006S CRESCENT CREEK PACESETTER 16U
BASIN PAYWEIGHT 1682 CRESCENT CREEK EULA 22X
21AR O LASS 7017 CRESCENT CREEK EULA 190T

BW:	WW:	YW:	B EPD:	W EPD:	Y EPD:	MILK:	CE EPD:
65	604	806	-1.1	47	66	24	5.5



Lot 69



BASIN PAYWEIGHT 1682

SELLING CHOICE ON LOTS
67, 68, AND 69

SELLING CHOICE



Lot 70

REF

CAR NEXT STEP 889

Male IMP 889F January 25 2018 2141280

SYDGEN 928 DESTINATION 5420

PRAIRIE PRIDE NEXT STEP 2036

FLYING V MISS PRIDE 426

LAR WINDY 64 4235

CAR MISS SUSIE 060

CAR SUSIE 101

LOT
70

CRESCENT CREEK ROSEBUD 127K

Female WOS 127K February 08 2022 2270930

CHAPMAN MEMENTO 3589A

CAR NEXT STEP 889

CRESCENT CREEK ROSEBUD 74E

CRESCENT CREEK ROSEBUD 141Y

BW:	WW:	YW:	B EPD:	W EPD:	Y EPD:	MILK:	CE EPD:
90	662	911	3.7	57	98	34	1

LOT
71

CRESCENT CREEK ROSEBUD 146K

Female WOS 146K February 13 2022 2271637

HA COUNSELOR 5118

CAR NEXT STEP 889

CRESCENT CREEK ROSEBUD 119F

CRESCENT CREEK ROSEBUD 41C

BW:	WW:	YW:	B EPD:	W EPD:	Y EPD:	MILK:	CE EPD:
94	695	1071	4.9	72	131	29	-1



Lot 71

**NOTE: OUT OF 22 SALES, 50%
OF THE HIGH SELLING HEIFERS
HAVE BEEN ROSEBUD'S.**

CRESCENT CREEK ROSEBUD 115F WAS
BORN AND BRED HERE, AND WENT ON TO
BE ONE OF THE MOST RECOGNIZED COWS
IN THE CANADIAN ANGUS HERDBOOK.

Pick of WOS 127K & WOS 146K – Here is a great opportunity to acquire the great Rosebud cow family. Both these great females go back to one of the greatest Rosebud cows to walk here, 101T. A cow that has left a lasting footprint on our herd, and in the later years became one of the most consistent donors to date. The Rosebuds have always stood the test of time and have also been the top producers. Packed with maternal greatness and offer structural soundness, udder quality, style, and great feet. Pick between either of these outstanding Nextstep daughters. The 889 daughters we have kept in our herd have been great. Great mothers that wean big calves but are phenotypically appealing, sound, and great udders. We feel the cross between the 889 sire and Rosebud cow family could offer a new genetic line and a new chapter of maternal cattle that are powerful and sound.

**LOT
72**

CRESCENT CREEK ROSEBUD 59K

Female WOS 59K January 25 2022 2270085

CRESCENT CREEK MOMENTUM 44E
CAR NEXT STEP 889 CRESCENT CREEK ROSEBUD 80G
 CRESCENT CREEK ROSEBUD 149D

BW:	WW:	YW:	B EPD:	W EPD:	Y EPD:	MILK:	CE EPD:
82	654	923	2.4	57	100	29	2



LOT 72

**LOT
73**

CRESCENT CREEK ROSEBUD 161K

Female WOS 161K February 17 2022 2271604

CHAPMAN MEMENTO 3589A
CAR NEXT STEP 889 CRESCENT CREEK ROSEBUD 45F
 CRESCENT CREEK ROSEBUD 113B

BW:	WW:	YW:	B EPD:	W EPD:	Y EPD:	MILK:	CE EPD:
107	702	1017	7.5	71	123	34	-10



LOT 73

**LOT
74**

CRESCENT CREEK ROSEBUD 164K

Female WOS 164K February 18 2022 2271609

CRESCENT CREEK ALTERNATIVE 516
CAR NEXT STEP 889 CRESCENT CREEK ROSEBUD 23F
 CRESCENT CREEK ROSEBUD 205T

BW:	WW:	YW:	B EPD:	W EPD:	Y EPD:	MILK:	CE EPD:
74	623	872	1.1	56	96	30	6



LOT 74

THE 2022 CALVING SEASON SAW IN
 EXCESS OF 50 NEXTSTEP OFFSPRING, WITH A
 LARGE PERCENTAGE BEING FEMALE. THUS, SUCH
 A LARGE OFFERING OF NEXTSTEP FEMALES. OUR
 LUCK IS TO YOUR BENEFIT!

SALE DAY COFFEE PROVIDED BY:

FAIRLAND SEEDS LTD.
 Melville, Sask.
 Call Tim at 306.730.9933

*Now Offering a Complete Line
 of Canola Seed Varieties!*

Competitive Pricing
 Corn and Soybeans Available
 Nexera Contracts - Ask about Premiums
 Alpine Plant Food and Ag Flex Grain Bags
 Take Advantage of Early Booking Programs
 More Products! Same Great Service!

**LOT
75**

CRESCENT CREEK NANCE 118K

Female DOS 118K February 06 2022 2270939

CHAPMAN MEMENTO 3589A

CAR NEXT STEP 889 CRESCENT CREEK NANCE 59D

CRESCENT CREEK BLACK NANCE 83Z

BW:	WW:	YW:	B EPD:	W EPD:	Y EPD:	MILK:	CE EPD:
90	600	829	3.4	53	91	30	1



LOT 75

**LOT
76**

CRESCENT CREEK CRUSHMAID 73K

Female WOS 73K January 28 2022 2264881

HA OUTSIDE 5161

CAR NEXT STEP 889 CRESCENT CREEK CRUSHMAID 36F

CRESCENT CREEK CRUSHMAID 65C

BW:	WW:	YW:	B EPD:	W EPD:	Y EPD:	MILK:	CE EPD:
70	614	869	0	55	91	31	9



LOT 76

**LOT
77**

CRESCENT CREEK LADY BATE 122K

Female WOS 122K February 07 2022 2270927

PA FORTITUDE 2500

CAR NEXT STEP 889 CRESCENT CREEK LADY BATE 11C

CRESCENT CREEK LADY BATE 141S

BW:	WW:	YW:	B EPD:	W EPD:	Y EPD:	MILK:	CE EPD:
94	674	1010	4.9	66	122	30	-4



LOT 77

LOT
78

CRESCENT CREEK HEROINE 109K

Female WOS 109K February 04 2022 2270919

S CHISUM 0206

CAR NEXT STEP 889

CRESCENT CREEK HEROINE 50D

CRESCENT CREEK HEROINE 34T

BW:	WW:	YW:	B EPD:	W EPD:	Y EPD:	MILK:	CE EPD:
100	632	888	6.7	59	96	29	-9



Lot 78

LOT
79

CRESCENT CREEK HEROINE 82K

Female KOS 82K January 30 2022 2270082

CRESCENT CREEK TOMBOY 15W

CAR NEXT STEP 889

CRESCENT CREEK HEROINE 64Z

CRESCENT CREEK HEROINE 167T

BW:	WW:	YW:	B EPD:	W EPD:	Y EPD:	MILK:	CE EPD:
76	571	819	2.9	50	87	27	1



Lot 79

LOT
80

CRESCENT CREEK ELEN ERICA 133K

Female WMO 133K February 09 2022 2270938

MC CUMBER 8R101 RITO 1136

CAR NEXT STEP 889

CRESCENT CREEK ELLEN ERICA 79D

MINBURN ELLEN ERICA 52X

BW:	WW:	YW:	B EPD:	W EPD:	Y EPD:	MILK:	CE EPD:
90	594	1010	53	53	93	26	-1



Lot 80

LOT
81

CRESCENT CREEK FLORA 104K

Female WOS 104K February 04 2022 2270915

H A IMAGE MAKER 0415

CAR NEXT STEP 889

AW FLORA 1D

GLENDOR FLORA 16X

BW:	WW:	YW:	B EPD:	W EPD:	Y EPD:	MILK:	CE EPD:
75	638	886	0.8	60	97	29	6



Lot 81

LOT
82

CRESCENT CREEK ROSEBUD 13K

Female WOS 13K January 10 2022 2264402

S MCCOY 373

CAR NEXT STEP 889 CRESCENT CREEK ROSEBUD 187D
CRESCENT CREEK ROSEBUD 048B

BW:	WW:	YW:	B EPD:	W EPD:	Y EPD:	MILK:	CE EPD:
85	657	912	2.6	62	100	28	1



LOT 82

LOT
83

CRESCENT CREEK ROSEBUD 49K

Female WOS 49K January 21 2022 2264473

CRESCENT CREEK PACESETTER 16U

CAR NEXT STEP 889 CRESCENT CREEK ROSEBUD 149B
CRESCENT CREEK ROSEBUD 70M

BW:	WW:	YW:	B EPD:	W EPD:	Y EPD:	MILK:	CE EPD:
80	586	842	1.3	45	78	25	4



LOT 83

LOT
84

CRESCENT CREEK QUEEN RUTH 56K

Female WOS 56K January 22 2022 2264513

KG WISDOM 1419

CAR NEXT STEP 889 CRESCENT CREEK QUEEN RUTH 48C
CRESCENT CREEK QUEEN RUTH 67Y

BW:	WW:	YW:	B EPD:	W EPD:	Y EPD:	MILK:	CE EPD:
90	611	833	4.8	60	104	29	-3



LOT 84

LOT
85

CRESCENT CREEK BARANDA 61K

Female WOS 61K January 25 2022 2264518

SILVER DOME DYNASTY 19T

CAR NEXT STEP 889 CRESCENT CREEK BARANDA 95X
CRESCENT CREEK BARANDA 212T

BW:	WW:	YW:	B EPD:	W EPD:	Y EPD:	MILK:	CE EPD:
88	659	948	3.7	59	100	28	-3



LOT 85

LOT
86

CRESCENT CREEK STUMPIE 31K

Female KOS 31K January 15 2022 2264489

CHAPMAN MEMENTO 3589A

CRESCENT CREEK NEXT STEP 4H CRESCENT CREEK STUMPIE 121E
CRESCENT CREEK STUMPIE 3B

BW:	WW:	YW:	B EPD:	W EPD:	Y EPD:	MILK:	CE EPD:
60	583	804	-2.2	46	78	27	12



LOT 86

LOT
87

CRESCENT CREEK LADY BATE 68K

Female WOS 68K January 27 2022 2264871

MAR INNOVATION 251

CRESCENT CREEK NEXT STEP 4H CRESCENT CREEK LADY BATE 1F
CRESCENT CREEK LADY BATE 49Z

BW:	WW:	YW:	B EPD:	W EPD:	Y EPD:	MILK:	CE EPD:
87	661	869	1.9	58	95	24	-1



LOT 87

LOT
88

CRESCENT CREEK JOAN 183K

Female WOS 183K February 26 2022 2276589

FLEURY BRUTUS 132B

SITZ DASH 10277

CRESCENT CREEK GLADIATOR 115G CRESCENT CREEK JOAN 48Y
CRESCENT CREEK QUEEN RUTH 67Y GDAR JOAN 9175

BW:	WW:	YW:	B EPD:	W EPD:	Y EPD:	MILK:	CE EPD:
78	682	918	2.4	50	83	25	4



LOT 88

LOT
89

CRESCENT CREEK COMPRESS 178K

Female WOS 178K February 21 2022 2276588

FLEURY BRUTUS 132B

HA OUTSIDE 5161 OSF

CRESCENT CREEK GLADIATOR 115G CRESCENT CREEK COMPRESS 88F
CRESCENT CREEK QUEEN RUTH 67Y CRESCENT CREEK COMPRESS 45B

BW:	WW:	YW:	B EPD:	W EPD:	Y EPD:	MILK:	CE EPD:
80	650	871	2.6	49	80	21	2



LOT 89



HA OUTSIDE 5161

MALE IMP 5161C FEBRUARY 24 2015 1950587

KG SOLUTION 0018
HA OUTSIDE 3008
 HA EVER LADY 1575

APEX WINDY 078
HA BLACKCAP LADY 2338
 H A BLACKCAP LADY 1055

LOT
90

CRESCENT CREEK QUEEN RUTH 58K

Female WOS 58K January 25 2022 2264514

CRESCENT CREEK TOMBOY 15W
CRESCENT CREEK QUEEN RUTH 151A
 CRESCENT CREEK QUEEN RUTH 155T

BW:	WW:	YW:	B EPD:	W EPD:	Y EPD:	MILK:	CE EPD:
80	574	843	1.2	42	78	28	6



Lot 90

LOT
91

CRESCENT CREEK COMPRESS 79K

Female WOS 79K January 29 2022 2264894

HA OUTSIDE 5161

CRESCENT CREEK PACESETTER 16U
CRESCENT CREEK COMPRESS 45B
 KBJ MISS COMPRESS 315T

BW:	WW:	YW:	B EPD:	W EPD:	Y EPD:	MILK:	CE EPD:
79	641	897	0.6	48	77	25	6



Lot 91

LOT
92

CRESCENT CREEK LARK 48K

Female WMO 48K January 21 2022 2264484

HA OUTSIDE 5161

SANDY BAR OT 16X
MCS LARK 35C
 MCS MISS LARK 51X

BW:	WW:	YW:	B EPD:	W EPD:	Y EPD:	MILK:	CE EPD:
96	676	864	3.1	46	76	35	4.5



Lot 92



LOT
93

CRESCENT CREEK STUMPIE 147K

Female KOS 147K February 13 2022 2271631

CRESCENT CREEK ENTREPRENEUR105A

CRESCENT CREEK FORTUNATE 8B CRESCENT CREEK STUMPIE 105F

CRESCENT CREEK STUMPIE 9R

BW:	WW:	YW:	B EPD:	W EPD:	Y EPD:	MILK:	CE EPD:
96	618	873	4.3	43	78	19	-6



CRESCENT CREEK FORTUNATE 8B

Male WOS 8B JANUARY 23 2014 1814288

SINCLAIR EMULATE 7XT28

SINCLAIR FORTUNATE SON

SINCLAIR BLACKBIRD 2P8 7079

CRESCENT CREEK PACESETTER 16U

CRESCENT CREEK ROSEBUD 124X

CRESCENT CREEK ROSEBUD 86U



LOT 93

LOT
94

CRESCENT CREEK DUCHESS 145K

Female WOS 145K February 13 2022 2271636

CHAPMAN MEMENTO 3589A

CRESCENT CREEK FORTUNATE 8B CRESCENT CREEK DUCHESS 41F

CRESCENT CREEK DUCHESS 71C

BW:	WW:	YW:	B EPD:	W EPD:	Y EPD:	MILK:	CE EPD:
80	643	805	0.4	44	73	25	5

LOT
95

CRESCENT CREEK DUCHESS 65K

Female WMO 65K January 27 2022 2264855

S A V RISING SUN 5179

CRESCENT CREEK FORTUNATE 8B

JL DUCHESS 7327

JL DUCHESS 4308

BW:	WW:	YW:	B EPD:	W EPD:	Y EPD:	MILK:	CE EPD:
87	629	858	2.6	52	88	21	0



LOT 94



LOT 95



SITZ DRY VALLEY 712H

(ET) MALE IMP 712H JANUARY 24 2020 2248827

HOOVER NO DOUBT
CONNEALY DRY VALLEY

BECCA OF CONAGA 1617

SITZ UPWARD 307R
SITZ PRIDE 308Y

SITZ PRIDE 44P



LOT 96

LOT 96

CRESCENT CREEK ERICA 129K

Female WOS 129K February 09 2022 2270931

JOINT CREEK CCOUNTRY 44X 206Z
SITZ DRY VALLEY 712H BENCH ERICA 750E
BHB ERICA 010X

BW:	WW:	YW:	B EPD:	W EPD:	Y EPD:	MILK:	CE EPD:
90	607	856	3	43	77	26	2



LOT 97

LOT 97

CRESCENT CREEK BLACKBIRD 151K

Female WOS 151K February 14 2022 2271642

HA COUNSELOR 5118
SITZ DRY VALLEY 712H NORDAL 3A BLACKBIRD 63F
EF BLACKBIRD 3A

BW:	WW:	YW:	B EPD:	W EPD:	Y EPD:	MILK:	CE EPD:
74	600	842	1	48	86	25	8

LOT 98

CRESCENT CREEK MISTRESS 105K

Female WOS 105K February 04 2022 22709

CRESCENT CREEK ENTREPENUR 100C
SITZ DRY VALLEY 712H CRESCENT CREEK MISTRESS 70G
SHEIDAGHAN MISTRESS 14Z

BW:	WW:	YW:	B EPD:	W EPD:	Y EPD:	MILK:	CE EPD:
68	675	803	-0.2	58	87	24	8



LOT 98

46

CONNEALY DRY VALLEY
SIRE OF SITZ DRY VALLEY 641H AND 712H



SITZ DRY VALLEY 641H

MALE IMP 641H FEBRUARY 01 2020 2248254

HOOVER NO DOUBT
CONNEALY DRY VALLEY
BECCA OF CONAGA 1617

RAVEN POWERBALL 53
SITZ BLACKCAP 16E
SITZ BLACKCAP 191C



Lot 99

LOT
99

CRESCENT CREEK ROSEBUD 92K

Female WOS 92K February 01 2022 2269946

HA OUTSIDE 5161

SITZ DRY VALLEY 712H **CRESCENT CREEK ROSEBUD 160F**
CRESCENT CREEK ROSEBUD 101T

BW:	WW:	YW:	B EPD:	W EPD:	Y EPD:	MILK:	CE EPD:
78	607	909	3	47	84	28	10



Lot 100

LOT
100

CRESCENT CREEK HEROINE 124K

Female WOS 124K February 08 2022 2270928

HA OUTSIDE 5161

SITZ DRY VALLEY 641H **CRESCENT CREEK HEROINE 51H**
CRESCENT CREEK HEROINE 166Z

BW:	WW:	YW:	B EPD:	W EPD:	Y EPD:	MILK:	CE EPD:
62	617	866	-2.1	44	79	33	15

LOT
101

CRESCENT CREEK ESTER 63K

Female WOS 63K January 27 2022 2264522

MACNAB SCOTCHMAN 379E

SITZ DRY VALLEY 641H **CRESCENT CREEK ESTHER 24H**
AW ESTHER 54C

BW:	WW:	YW:	B EPD:	W EPD:	Y EPD:	MILK:	CE EPD:
78	718	1074	1.4	62	123	34	10



Lot 101



CRESCENT CREEK ALTERNATIVE 54F

Male WOS 54F January 23 2018 2041023

SITZ ALLIANCE 6595
CRESCENT CREEK ALLIANCE 29N
KBJ MISS COMPRESS 862K

CRESCENT CREEK ALTERNATIVE 516

B S S LIMITED DESIGN
CRESCENT CREEK LASSIE 48N
CRESCENT CREEK LASSIE 33H

O C C EMBLAZON 854E
B C C-J C L EMBLAZON 038-287
B C C 1531 ELDORENE 826-038

CRESCENT CREEK QUEEN RUTH 67Y

MINBURN MAIN EVENT 82R
CRESCENT CREEK QUEEN RUTH 56T
CRESCENT CREEK QUEEN RUTH 66M

BW	98
WW	740
YW	1410
B EPD	6.8
W EPD	64
Y EPD	101
Milk	30
CE EPD	-9



Calves	Avg BW	Adj 205	Adj 365
Males	87 lbs	705 lbs	1200 lbs
Females	84 lbs	635 lbs	1000 lbs

54F WAS A SALE TOPPER IN OUR 2019 SALE TO PINE GROVE ANGUS. WE PURCHASED A 1/2 INTEREST BACK IN THE BULL AS WE FELT IT WAS VERY IMPORTANT TO CONTINUE THE INFLUENCE OF HIS QUEEN RUTH 67Y DAM. TO DATE WE HAVE 3 WALKING SONS OFF TIS COW IN OUR BULL INVENTORY. WOS 121D, WOS 54F, AND WOS 115G. GREAT COWS PRODUCE GREAT THINGS! THIS SIRE GROUP IS VERY UNIFORM AND WILL ADD POUNDS TO YOUR BOTTOM LINE AS WELL AS SOME OF THE BEST MATERNAL POWER.

LOT
102

CRESCENT CREEK ROSEBUD 202K

Female WOS 202K March 08 2022 2280382

PA FORTITUDE 2500

CRESCENT CREEK ALTERNATIVE 54F CRESCENT CREEK ROSEBUD 41C

CRESCENT CREEK ROSEBUD 101T

BW:	WW:	YW:	B EPD:	W EPD:	Y EPD:	MILK:	CE EPD:
95	696	978	5.7	61	106	26	-6



Lot 102

LOT
103

CRESCENT CREEK HEROINE 159K

Female WOS 159K FEBRUARY 16 2022 2271648

BEVERLY HILLS FANDANGO 404

CRESCENT CREEK ALTERNATIVE 54F CRESCENT CREEK HEROINE 44W

CRESCENT CREEK LADY BATE 111L

BW:	WW:	YW:	B EPD:	W EPD:	Y EPD:	MILK:	CE EPD:
104	636	884	8	52	85	26	-12



Lot 103

SALE DAY DONUTS PROVIDED BY:

 **Cornerstone**
CREDIT UNION

LOT
104

CRESCENT CREEK CRUSHMAID 184K

Female WOS 184K February 28 2022 2276590

S CHISUM 0206

CRESCENT CREEK ALTERNATIVE 54F CRESCENT CREEK CRUSHMAID 126D

DRYLAND CRUSHMAID 732

BW:	WW:	YW:	B EPD:	W EPD:	Y EPD:	MILK:	CE EPD:
100	736	992	6.7	62	99	30	-10



Lot 104

LOT
105

CRESCENT CREEK APRIL 193K

Female WMO 193K March 05 2022 2279512

BAR-E-L CALDWELL 9C

CRESCENT CREEK ALTERNATIVE 54F CRESCENT CREEK APRIL 8F

BAR-E-L APRIL 201X

BW:	WW:	YW:	B EPD:	W EPD:	Y EPD:	MILK:	CE EPD:
95	647	923	6	56	90	28	-7



Lot 105

LOT
106

CRESCENT CREEK ERROLLINE 160K

Female WMO 160K February 17 2022 2271625

SANDY BAR 16X

CRESCENT CREEK ALTERNATIVE 54F MCS ERROLLINE 39C

MCS ERROLLINE 11Y

BW:	WW:	YW:	B EPD:	W EPD:	Y EPD:	MILK:	CE EPD:
103	691	940	6.7	62	99	29	-10



Lot 106

LOT
107

CRESCENT CREEK CRUSHMAID 210K

Female WOS 210K March 10 2022 2299193

CRESCENT CREEK PACESETTER 16U

CRESCENT CREEK ALTERNATIVE 54F CRESCENT CREEK CRUSHMAID 90A

DRYLAND CRUSHMAID 732

BW:	WW:	YW:	B EPD:	W EPD:	Y EPD:	MILK:	CE EPD:
88	676	824	4	49	69	27	-4



Lot 107

LOT
108

CRESCENT CREEK FLORA 111K

Female WOS 111K February 4 2022 2299186

EXAR MONUMENTAL 6056B
CUDLOBE MONUMENTAL 112H
CUDLOBE MISS PRIDE 108F

MINBURN ADDICTION 70B
CRESCENT CREEK FLORA 152H
AW FLORA 1D

BW:	WW:	YW:	B EPD:	W EPD:	Y EPD:	MILK:	CE EPD:
74	706	915	-0.3	57	99	28	9



LOT 108

LOT
109

CRESCENT CREEK CRUSHMAID 149K

Female WOS 149K February 14 2022 2271640

SHEIDAGHAN GREAT SCOT 44Z
MACNAB SCOTCHMAN 379E
MACNAB IVY 379Y

FLEURY BARDOLENE 115B
CRESCENT CREEK CRUSHMAID 162E
DRYLAND CRUSHMAID 732

BW:	WW:	YW:	B EPD:	W EPD:	Y EPD:	MILK:	CE EPD:
74	706	915	2.8	49	94	28	1



LOT 109

LOT
110

CRESCENT CREEK NANCE 28K

Female DOS 28K January 14 2022 2275669

PM EXECUTIVE DECISION 5'17
W SUNRISE EXECUTIVE LAW 507H
HF TIBBIE 27D

CHAPMAN MEMENTO 3589A
CRESCENT CREEK NANCE 97E
CRESCENT CREEK BLACK NANCE 83Z

BW:	WW:	YW:	B EPD:	W EPD:	Y EPD:	MILK:	CE EPD:
88	622	904	2.3	59	100	19	2



LOT 110



VINCENT SOMOGYI

Box 121, Willowbrook, SK S0A 4P0
306.621.1453 | 306.782.7499



STOCKMAN SELECT SALE

NEXT SALE: DECEMBER 2023

We would like to thank all the producers who consigned their females to the STOCKMAN SELECT bred female sale held at WHITEWOOD AUCTION. The positive remarks of the quality of the offering bodes well to this becoming an excellent avenue to merchandising your product. Crescent Creek is proud to sponsor this sale of females that are either bred to or offspring of our genetics. The females must be bred by the owner. It is our goal to enhance the profitability of our dedicated customer base.



Keep an Eye on Everything Important.
Corral Cameras - Barn Cameras - Stationary and PTZ

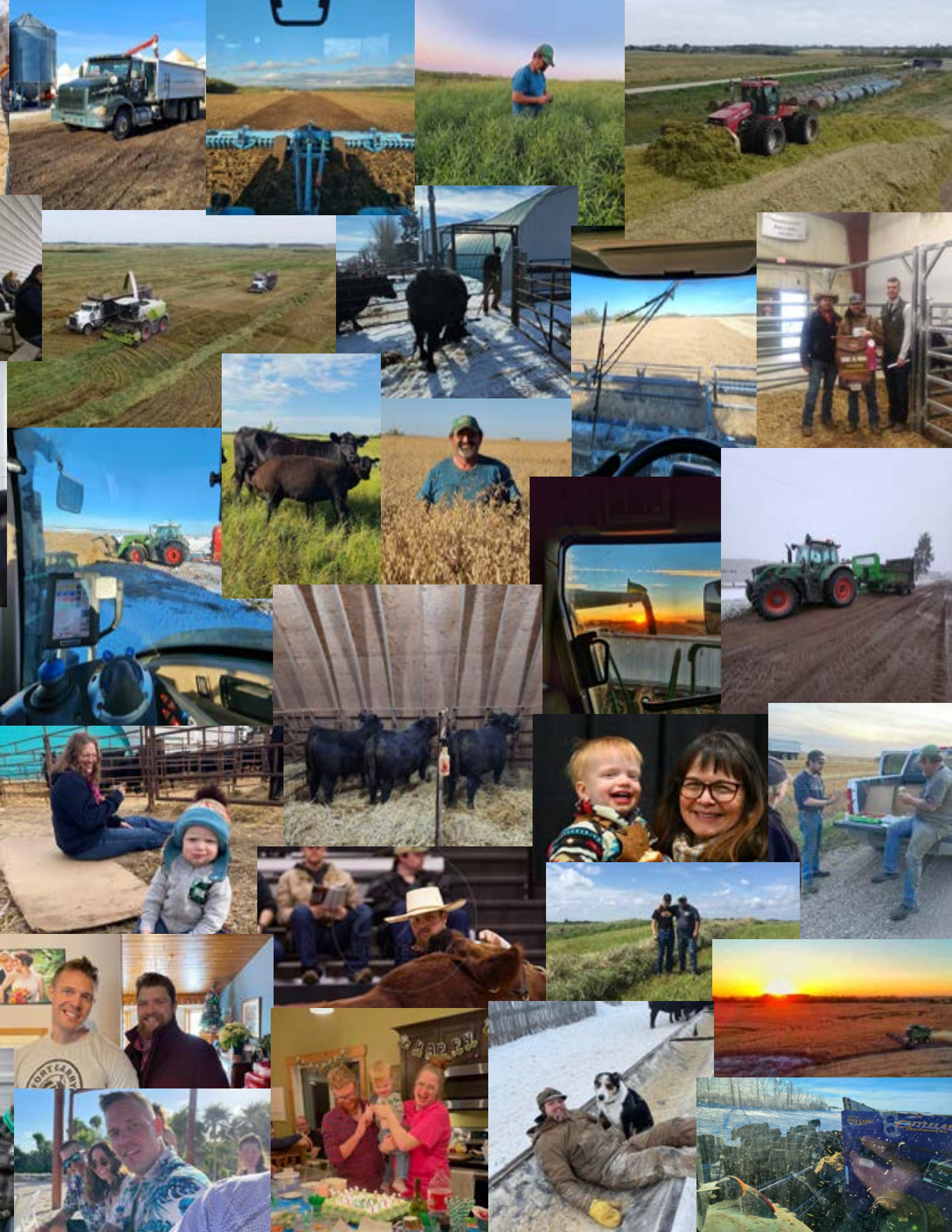


Steven & Petrunia Olson

306-876-4961
306-621-6723
info@vipertechgroup.com







WE ARE EXCITED TO ADD GA STRETCH 392 TO
OUR BREEDING LINEUP IN 2023



WATCH FOR KR STORM 1381 OFFSPRING IN
OUR 2024 SALE



DIRECTIONS TO THE FARM:
GOOGLE MAPS SEARCH CRESCENT CREEK ANGUS OR RANGE ROAD 2091

FROM MELVILLE: 18 MILES WEST ON HIGHWAY 15 & 3 MILES NORTH ON CRESCENT CREEK ROAD

FROM ITUNA: 18 MILE EAST & 3 MILES NORTH ON CRESCENT CREEK ROAD

FROM YORKTON: 29 MILES WEST ON HIGHWAY 52 & 8 MILES SOUTH ON CRESCENT CREEK ROAD



NOTES:

THE ANGUS COW

BORROWED FROM MONTANA RANCH

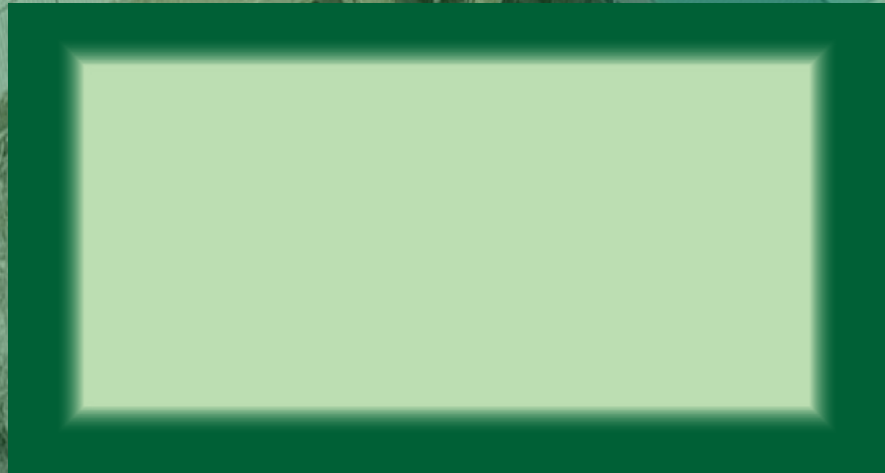
THE ANGUS BREED'S POSITION AS THE NUMBER ONE BEEF BREED IN THE WORLD WAS BUILT ON THE BACK OF THE ANGUS COW. SHE WAS RELIABLE, PRODUCTIVE, PREDICTABLE AND BUILT FOR THE ENVIRONMENT SHE INHABITED. THAT ANGUS COW WAS FERTILE, FUNCTIONAL AND POSSESSED A MATERNAL INSTINCT AND INTELLIGENCE THAT BORDERED ON MYTHICAL. IN THE HILLS OF CALIFORNIA, THE NORTHERN PLAINS OF MONTANA AND THE DAKOTAS, THE ARID SOUTHWEST, THE CORN BELT OF THE MIDWEST AND THE HOT, HUMID SOUTHEAST, THAT ANGUS COW WENT ABOUT HER BUSINESS OF KEEPING COUNTLESS RANCHES IN THE BLACK.

THAT ANGUS COW BEGAN TO CHANGE WITH THE CONSOLIDATION OF THE PACKING INDUSTRY AND THE GROWTH OF GRID-BASED MARKETING TAKING PLACE OVER THE LAST TWENTY-FIVE YEARS. DURING THAT TIME SPAN, INDUSTRY EXPERTS BEGAN PROCLAIMING THAT WE MUST ADD MORE MARBLING, MORE GROWTH AND BASICALLY MORE OF EVERYTHING. GENETIC TREND IN THE BEEF CATTLE BUSINESS BECAME DRIVEN BY THEORY DEVELOPED IN THE BOARD ROOMS OF PACKING HOUSES AND IN THE CLASS ROOMS OF UNIVERSITIES. BREEDING PROGRAMS BEGAN TAKING THEIR CUES FROM SALE REPORTS, SEMEN COMPANIES AND MARKETTERS INTENT ON CREATING CONSTANT CHURN.

AT FIRST THE CHANGES WERE SUBTLE. TODAY, IT'S PAINFULLY OBVIOUS THAT THE PURSUIT OF MORE CARCASS MERIT AND GROWTH CAME AT THE EXPENSE OF THE ATTRIBUTES THAT MADE THE ANGUS COW THE MOST EFFICIENT FACTORY IN THE BUSINESS. ULTIMATELY, THOSE PAYING THE STEEPEST PRICE FOR THIS CONVERSATION ARE THE RANCHERS WHOSE LIVELIHOODS DEPEND SOLELY ON EFFICIENTLY RAISING CATTLE IN OUR NATION'S HARSHTEST ENVIRONMENTS. THESE RANCHERS HAVE SEEN THEIR MARGINS LESSEN AND INPUTS INCREASE WITH EVERY CALF CROP. THAT ANGUS COW WHICH WAS THEIR MOST VALUABLE ASSET TWENTY-FIVE YEARS AGO HAS BECOME ONE OF THE COSTLIEST LIABILITIES TODAY. THAT ANGUS COW HAS GOTTEN TOO BIG FOR HER ENVIRONMENT, FAILING TO BREED ON TIME; HER CALF HAS MORE GENETIC POTENTIAL FOR WEANING GROWTH THAN CAN BE REALIZED IN MOST REAL-WORLD RANCH ENVIRONMENTS. THAT ANGUS COW IS OFTEN POOR FOOTED, POOR UDDERED AND REQUIRES SUPERVISION AT CALVING TIME. THE MATERNAL INSTINCT AND INTELLIGENCE WHICH WAS A TRADEMARK OF THAT ANGUS COW HAS BEEN REPLACED BY AN INSTINCT TO RUN FOR THE FEED TRUCK WHEN THE GOING GET TOUGH.



Crescent Creek Angus
Box 192
Goodeve, SK, Canada
S0A 1C0



JOIN US FOR OUR OPEN HOUSE MARCH 18 & 19